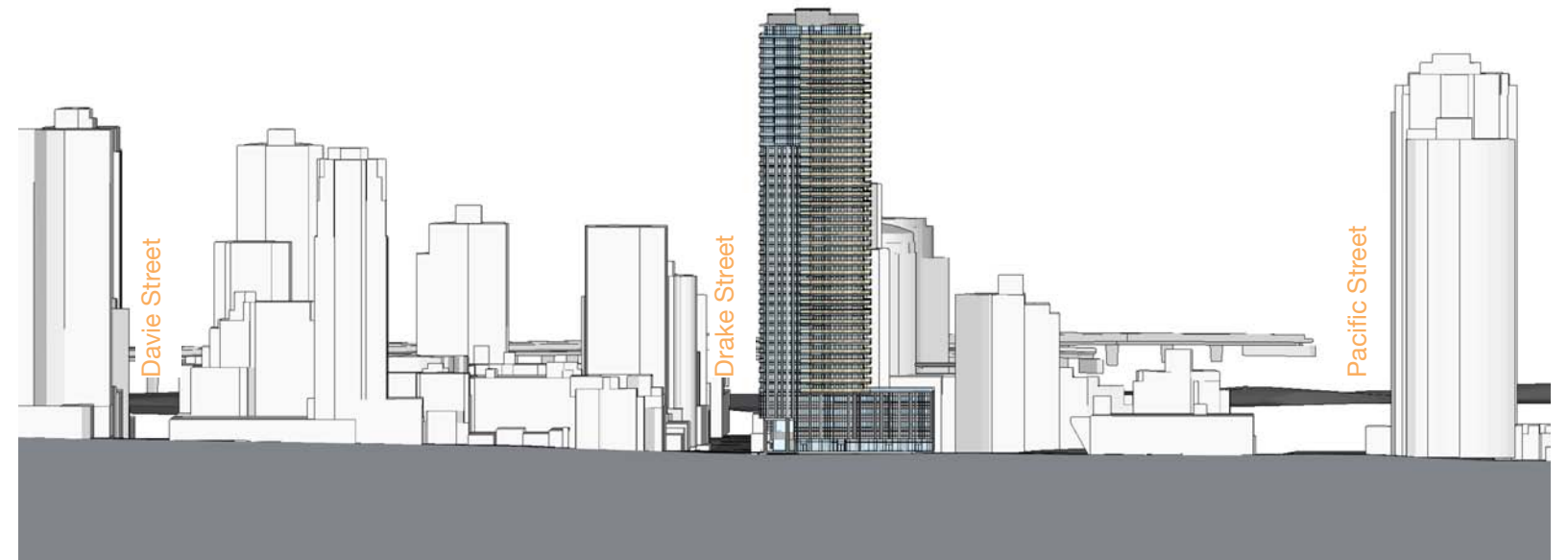
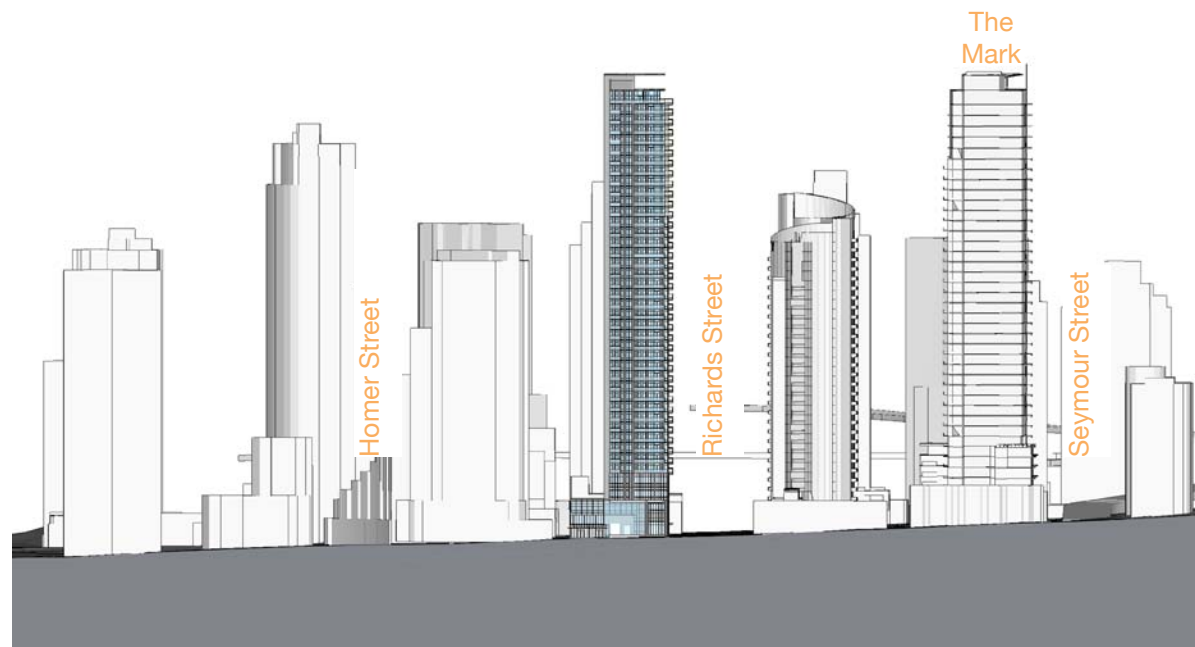


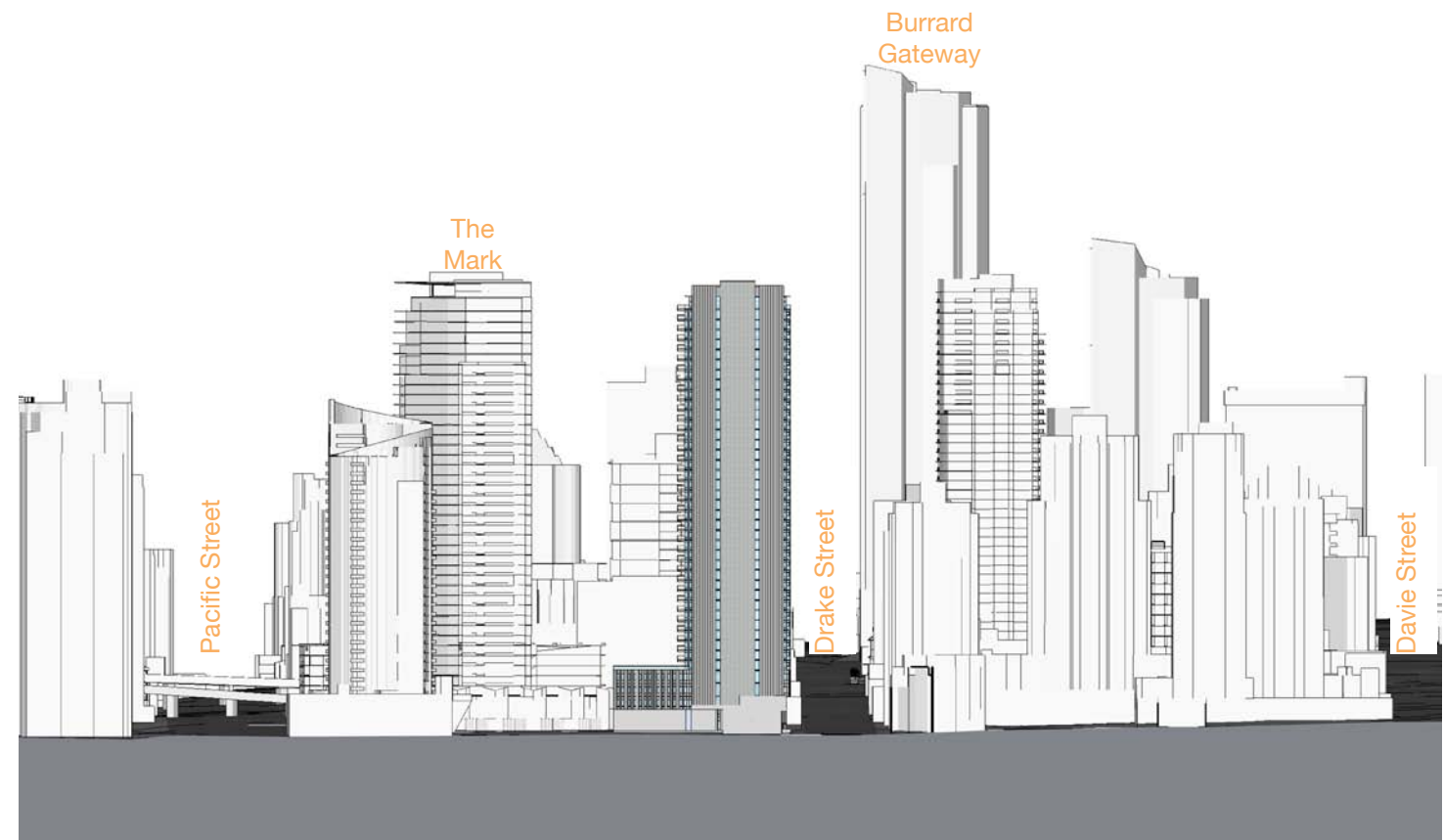
A 3-D analysis has been undertaken to illustrate the impact of this proposed tower in the broader skyline of Downtown South. In order to connect this project with some of the newer developments in the southern part of downtown the study has been taken from Pacific Boulevard in the east to Burrard Street in the west. This scope includes the Mark, located at Seymour and Pacific Streets and the Burrard gateway project on the Toyota site at Burrard and Drake Streets.



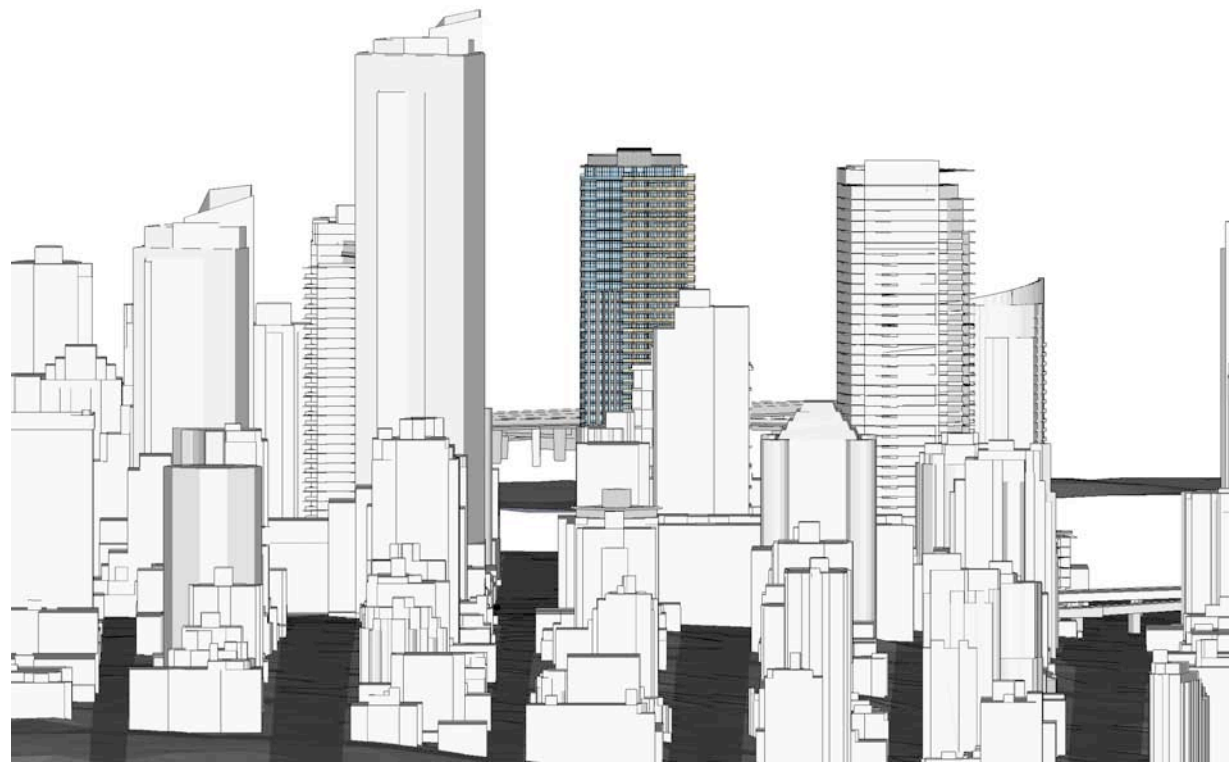
RICHARDS STREET ELEVATION



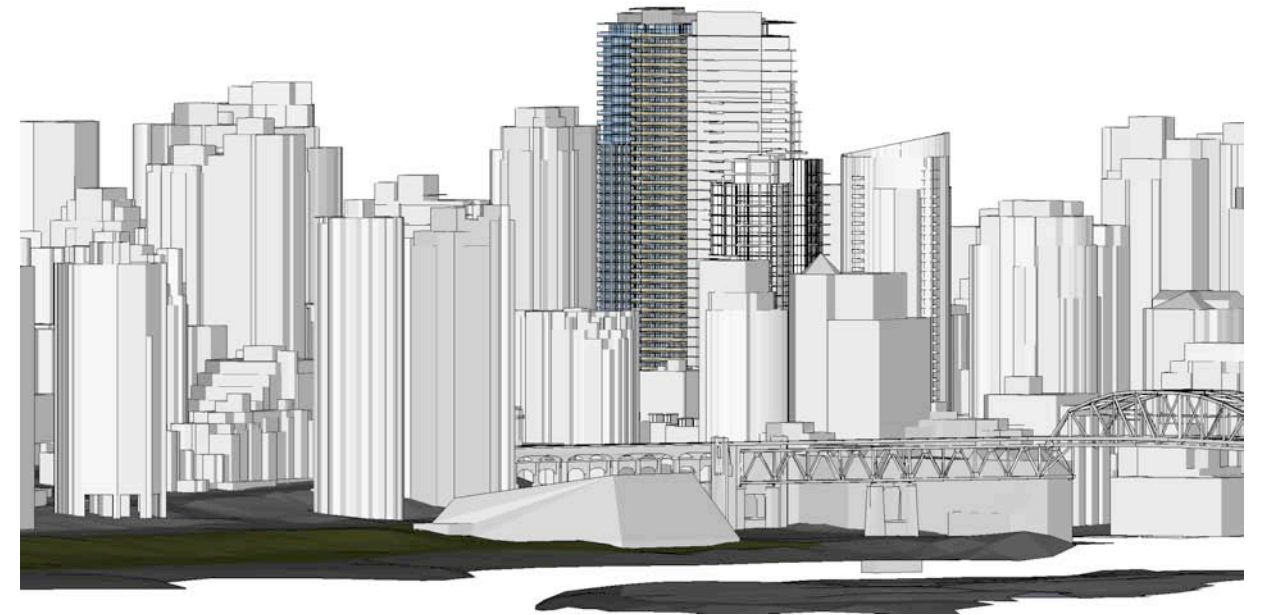
DRAKE STREET ELEVATION



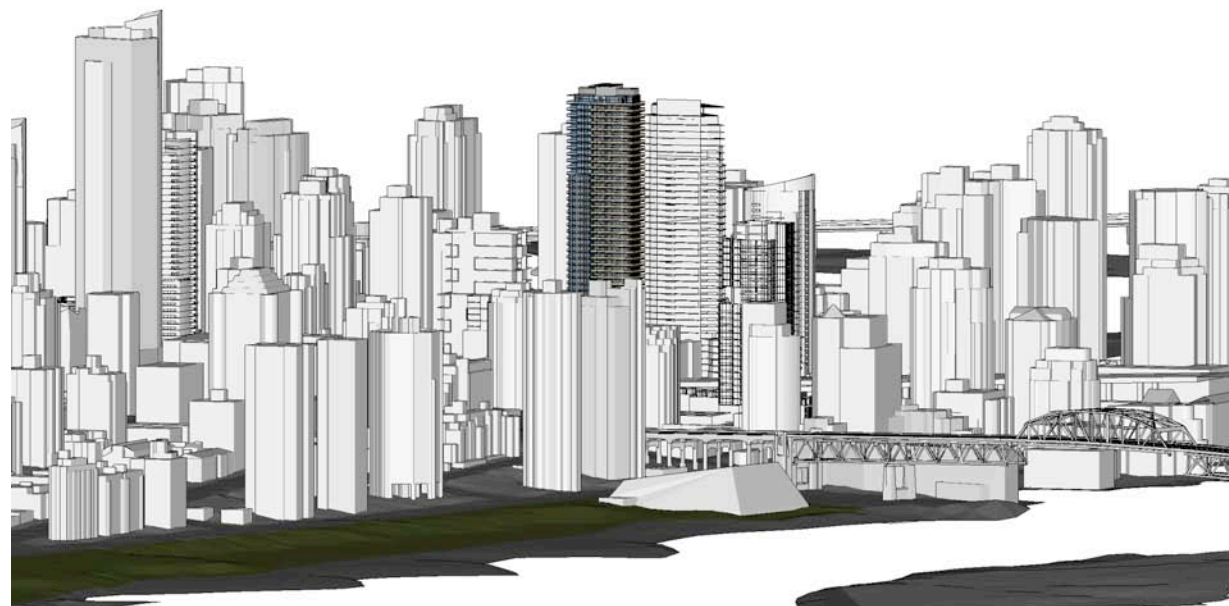
LANE ELEVATION



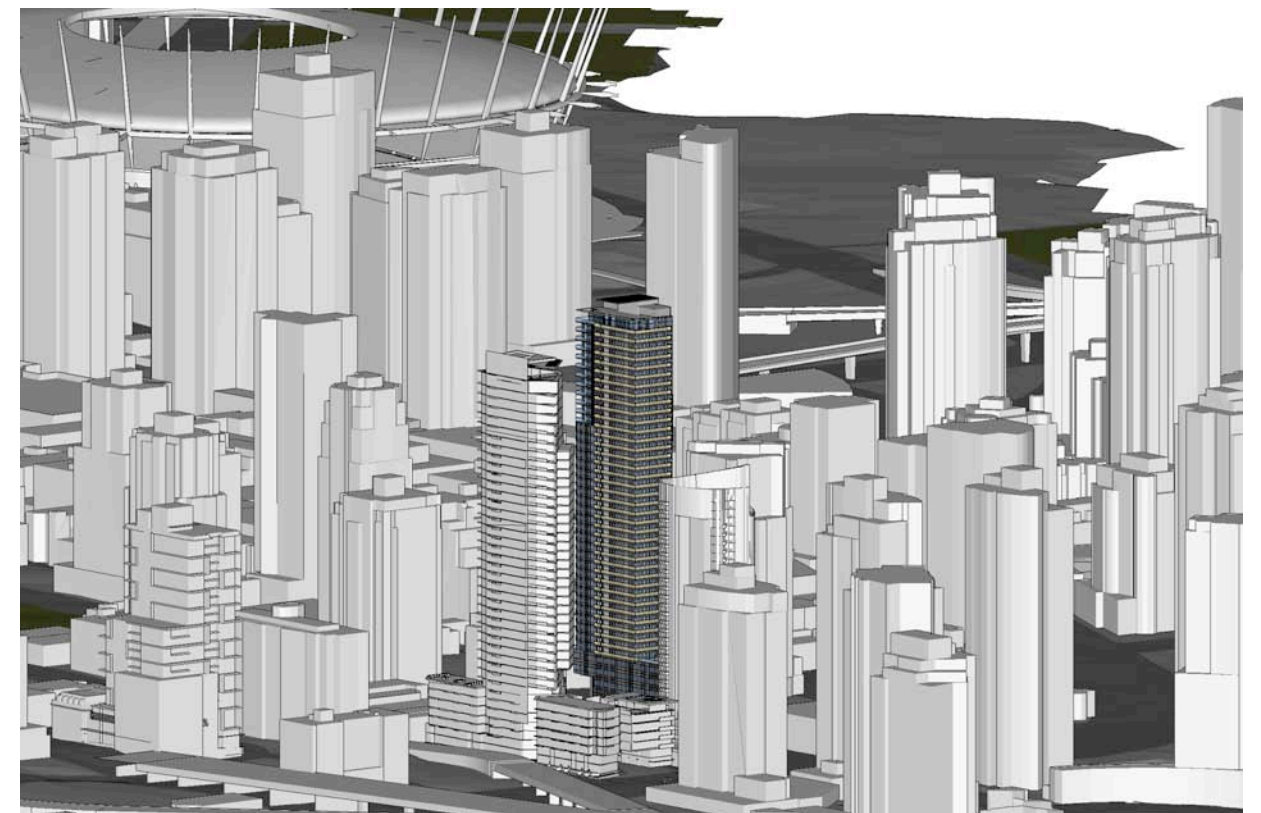
VIEW LOOKING SE FROM WEST END



VIEW FROM VANIER PARK

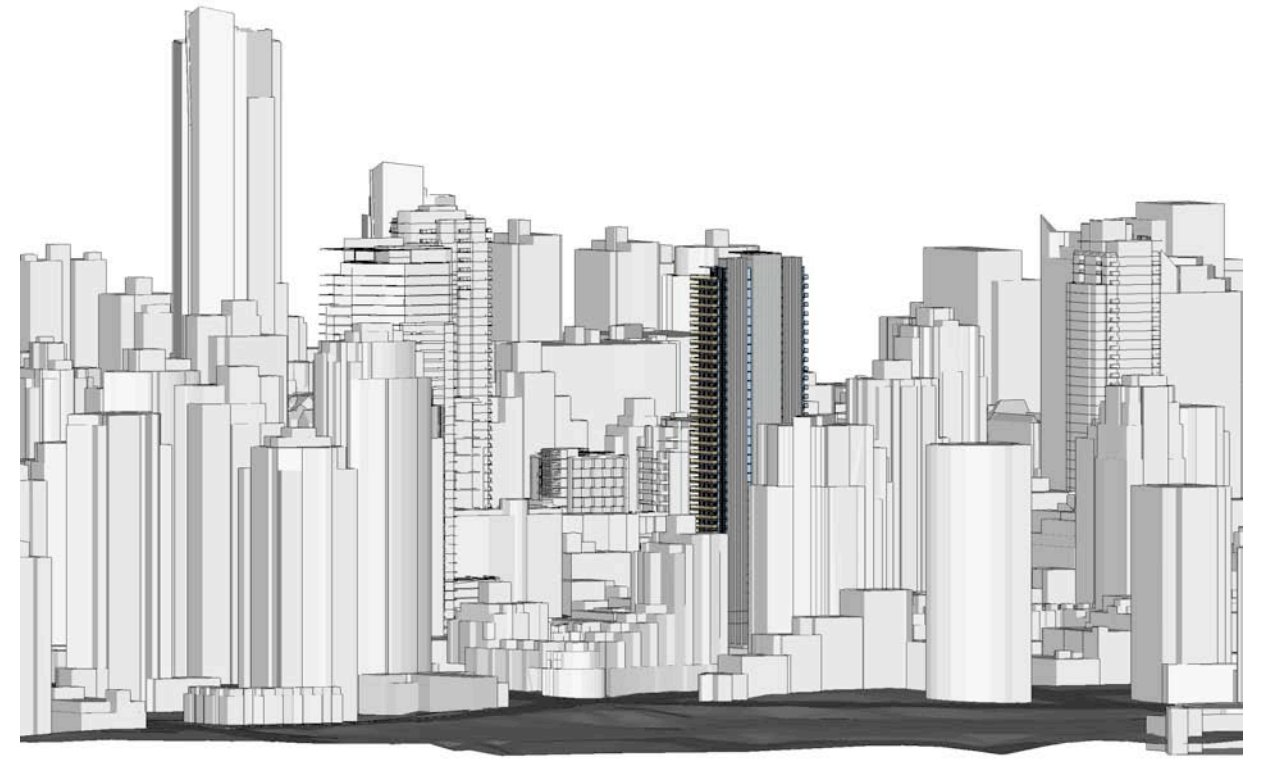


VIEW FROM ENGLISH BAY

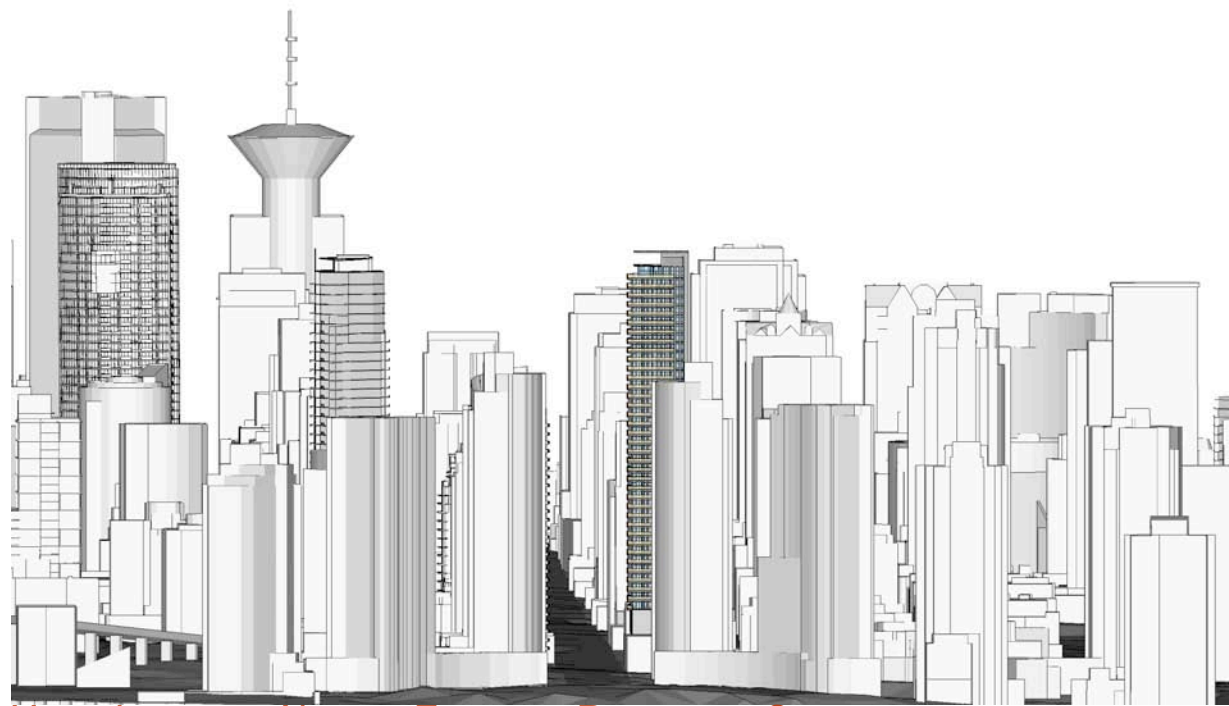


AERIAL VIEW FROM ABOVE GRANVILLE STREET BRIDGE

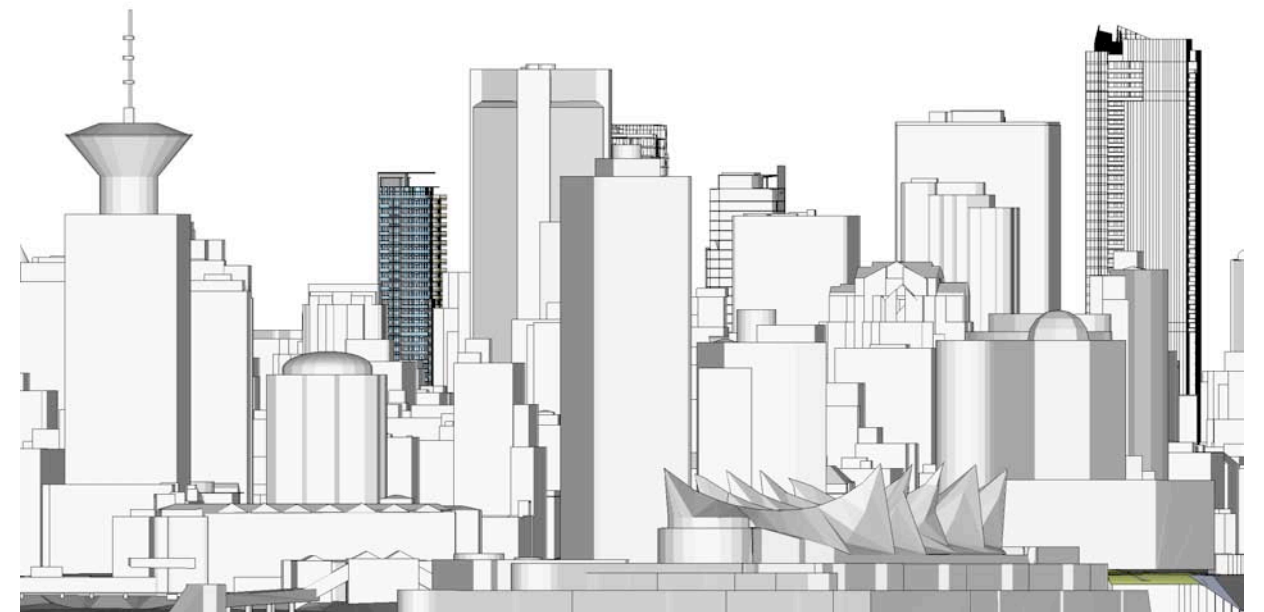




VIEW LOOKING NORTH FROM FAIRVIEW



VIEW LOOKING NORTH EAST UP RICHARDS STREET



VIEW LOOKING SOUTH WEST FROM BURRARD INLET