

# LEED Checklist

## 63 7 4 36 Total Project Score & Rating GOLD

Certified 40 to 49 points Silver 50 to 59 points Gold 60 to 79 points

### 23 1 2 Sustainable Sites Possible Points 26

Y	Y?	N?	N			
Y				Prereq 1	<b>Construction Activity Pollution Prevention</b>	
1				Credit 1	<b>Site Selection</b>	1
5				Credit 2	<b>Development Density and Community Connectivity</b>	3,5
1				Credit 3	<b>Brownfield Redevelopment</b>	1
6				Credit 4.1	<b>Alternative Transportation, Public Transportation Access</b>	3,6
1				Credit 4.2	<b>Alternative Transportation, Bicycle Storage &amp; Changing Rooms</b>	1
3				Credit 4.3	<b>Alternative Transportation, Low-Emitting and Fuel-Efficient Vehicles</b>	3
2				Credit 4.4	<b>Alternative Transportation, Parking Capacity</b>	2
1				Credit 5.1	<b>Site Development, Protect and Restore Habitat</b>	1
			1	Credit 5.2	<b>Site Development, Maximize Open Space</b>	1
1				Credit 6.1	<b>Stormwater Design, Quantity Control</b>	1
			1	Credit 6.2	<b>Stormwater Design, Quality Control</b>	1
1				Credit 7.1	<b>Heat Island Effect, Non-Roof</b>	1
	1			Credit 7.2	<b>Heat Island Effect, Roof</b>	1
1				Credit 8	<b>Light Pollution Reduction</b>	1

### 5 1 4 Water Efficiency Possible Points 10

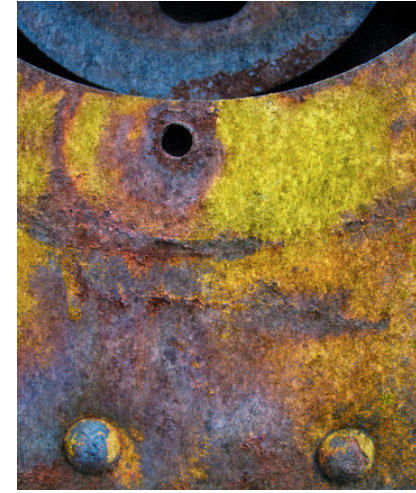
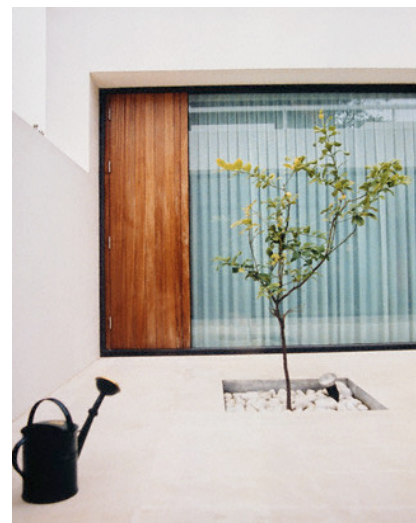
Y	Y?	N?	N			
Y				Prereq 1	<b>Water Use Reduction</b>	
2			2	Credit 1	<b>Water Efficient Landscaping, Reduce by 50% , No Potable Water Use</b>	2,4
			2	Credit 2	<b>Innovative Wastewater Technologies</b>	2
3		1		Credit 3	<b>Water Use Reduction, 30%, 35%, 40% Reduction</b>	2-4

### 8 5 22 Energy and Atmosphere Possible Points 35

Y	Y?	N?	N			
Y				Prereq 1	<b>Fundamental Commissioning of Building Energy Systems</b>	
Y				Prereq 2	<b>Minimum Energy Performance</b>	
Y				Prereq 3	<b>Fundamental Refrigerant Management</b>	
6	3		10	Credit 1	<b>Optimize Energy Performance</b>	1-19
			7	Credit 2	<b>On-site Renewable Energy</b>	1-7
	2			Credit 3	<b>Enhanced Commissioning</b>	2
2				Credit 4	<b>Enhanced Refrigerant Management</b>	2
			3	Credit 5	<b>Measurement &amp; Verification</b>	3
			2	Credit 6	<b>Green Power</b>	2

**Legend**

Blue	Credit Complete
Green	Credit Incomplete
White	Not Attempting
Y	Prerequisite (Must Achieve)



## Possible Points 110

Platinum 80 or more points

### 6 1 7 Materials and Resources Possible Points 14

Y	Y?	N?	N			
Y				Prereq 1	<b>Storage and Collection of Recyclables</b>	
			3	Credit 1.1	<b>Building Reuse, Maintain Existing Walls, Floor and Roof</b>	1-3
			1	Credit 1.2	<b>Building Reuse, Maintain Interior Non-Structural Elements</b>	1
2				Credit 2	<b>Construction Waste Management, Divert 50% , 75%</b>	1-2
			2	Credit 3	<b>Materials Reuse, 5%, 10%</b>	1-2
2				Credit 4	<b>Recycled Content, 10%, 20%</b>	1-2
2				Credit 5	<b>Regional Materials, 20%, 30%</b>	1-2
			1	Credit 6	<b>Rapidly Renewable Materials</b>	1
		1		Credit 7	<b>Certified Wood</b>	1

### 11 1 2 1 Indoor Environmental Quality Possible Points 15

Y	Y?	N?	N			
Y				Prereq 1	<b>Minimum IAQ Performance</b>	
Y				Prereq 2	<b>Environmental Tobacco Smoke (ETS) Control</b>	
	1			Credit 1	<b>Outdoor Air Delivery Monitoring</b>	1
			1	Credit 2	<b>Increased Ventilation</b>	1
1				Credit 3.1	<b>Construction IAQ Management Plan, During Construction</b>	1
1				Credit 3.2	<b>Construction IAQ Management Plan, Before Occupancy</b>	1
1				Credit 4.1	<b>Low-Emitting Materials, Adhesives &amp; Sealants</b>	1
1				Credit 4.2	<b>Low-Emitting Materials, Paints and Coatings</b>	1
1				Credit 4.3	<b>Low-Emitting Materials, Flooring Systems</b>	1
		1		Credit 4.4	<b>Low-Emitting Materials, Composite Wood and Agrifiber</b>	1
1				Credit 5	<b>Indoor Chemical &amp; Pollutant Source Control</b>	1
1				Credit 6.1	<b>Controllability of Systems, Lighting</b>	1
1				Credit 6.2	<b>Controllability of Systems, Thermal Comfort</b>	1
1				Credit 7.1	<b>Thermal Comfort, Design</b>	1
		1		Credit 7.2	<b>Thermal Comfort, Verification</b>	1
1				Credit 8.1	<b>Daylight &amp; Views, Daylight 75% of Spaces</b>	1
1				Credit 8.2	<b>Daylight &amp; Views, Views for 90% of Spaces</b>	1

### 6 Innovation & Design Process Possible Points 6

Y	Y?	N?	N			
1				Credit 1.1	<b>Innovation in Design: Exemplary Performance SSc7.1</b>	1
1				Credit 1.2	<b>Innovation in Design: Exemplary Performance Materials</b>	1
1				Credit 1.3	<b>Innovation in Design: Green Building Education</b>	1
1				Credit 1.4	<b>Innovation in Design: Green Cleaning Program</b>	1
1				Credit 1.5	<b>Innovation in Design: Low Mercury Lighting</b>	1
1				Credit 2	<b>LEED™ Accredited Professional</b>	1

### 4 Regional Priority Possible Points 4

Y	Y?	N?	N			
1				Credit 1	<b>Durable Building</b>	1
1				Credit 2.1	<b>Regional Priority</b>	1
1				Credit 2.2	<b>Regional Priority</b>	1
1				Credit 2.3	<b>Regional Priority</b>	1

ane Consulting