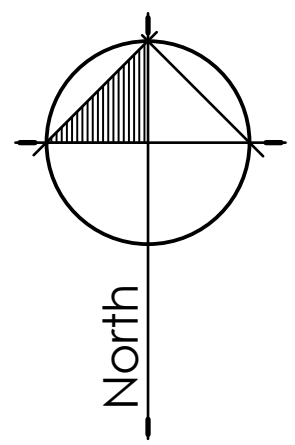
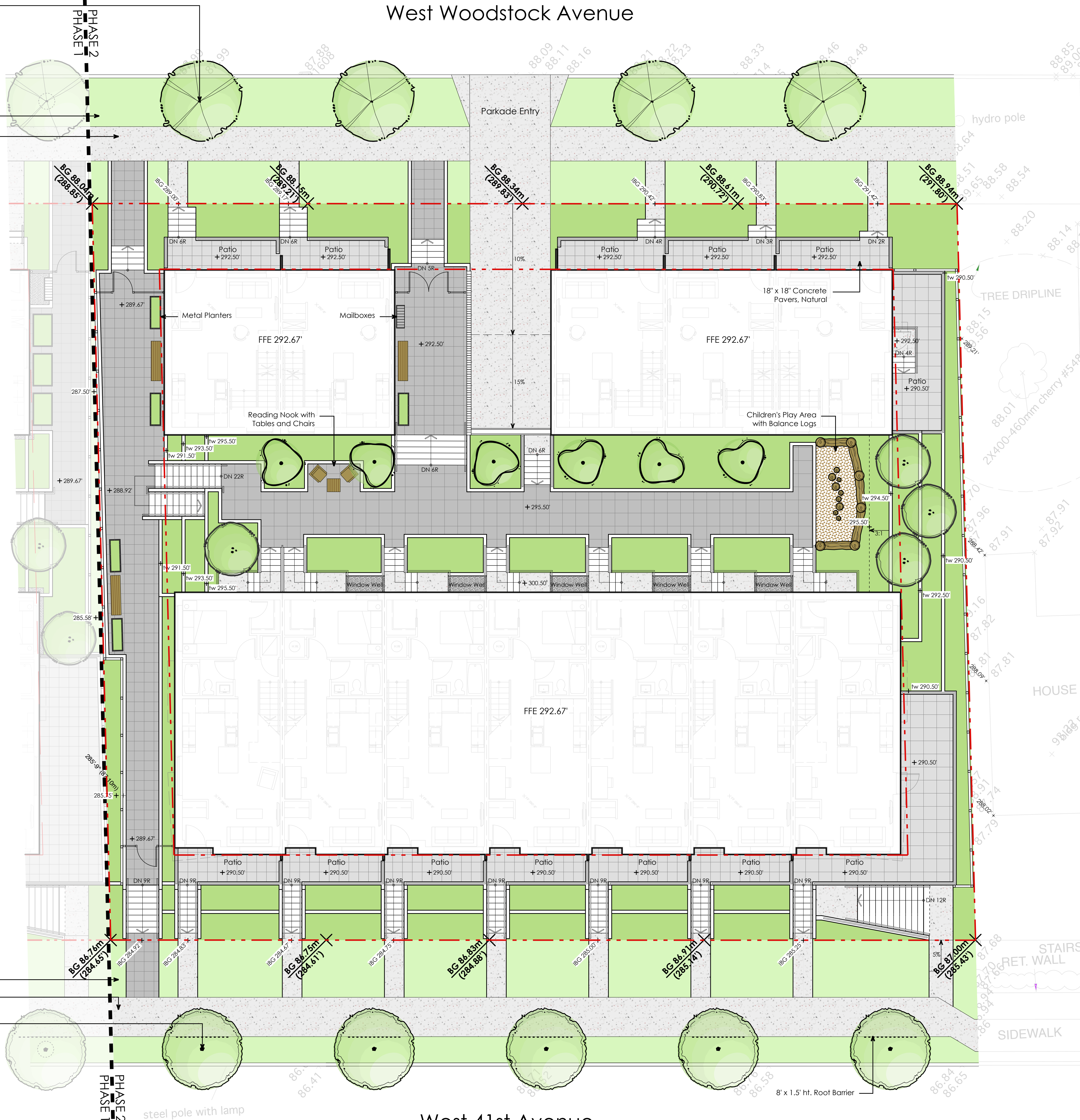


# West Woodstock Avenue

New Street Tree Planting:  
 Contact Eileen Curran, Streets Engineering (604.871.6131) to confirm tree planting locations. Contact Cabot Lyford, Park Board (604.257.8587 or 311) for tree species selection and planting requirements. Final spacing, quantity and tree species to the satisfaction of the General Manager of Engineering Services.  
 New trees must be of good standard, minimum 2.4 inches (6 cm) caliper, and installed with approved root barriers, tree guards and appropriate soil. Root barriers shall be 8/2.4 m long and 18/450mm ht. Planting depth of root ball must be below sidewalk grade. New street trees to be confirmed prior to issuance of the building permit. Call Park Board for inspection after tree planting completion.

Sand-based Saddled Lawn  
 6' wide CIP Concrete sidewalk c/w broom finish and saw cuts to City of Vancouver Engineering Standard



02	Feb 17, 2017	Re-issued for Rezoning
01	Feb 17, 2017	Issued for Rezoning
no.:	date:	item:
Revisions:		

**durante kreuk**  
 Durante Kreuk Ltd.  
 102 - 1637 West 5th Avenue  
 Vancouver BC V6J 1N5  
 t: 604 684 4611  
 f: 604 684 0577  
 www.dkl.bc.ca

Client:  
**Next Oakridge 2 Development Limited Partnership**

Project:  
**Woodstock at Oakridge Phase 2**  
 119-125-133 West 41st Ave.  
 Vancouver, BC

Drawn by: JC  
 Checked by: PK  
 Date: Nov 24, 2017  
 Scale: 1/8" = 1'-0"

Drawing Title:  
**Landscape Plan**

Project No.: 17013  
 Sheet No.:

### Materials Legend

<b>Surfaces:</b>	<b>Furniture &amp; Fences:</b>

### Grading Legend

+285.98	existing elevation
+291.5	proposed elevation
tw	top of wall
bw	bottom of wall
2%	percent of down slope
ts	top of stair
bs	bottom of stair
BG	building grade

Sand-based Saddled Lawn  
 6' wide CIP Concrete sidewalk c/w broom finish and saw cuts to City of Vancouver Engineering Standard

New Street Tree Planting:  
 Contact Eileen Curran, Streets Engineering (604.871.6131) to confirm tree planting locations. Contact Cabot Lyford, Park Board (604.257.8587 or 311) for tree species selection and planting requirements. Final spacing, quantity and tree species to the satisfaction of the General Manager of Engineering Services.  
 New trees must be of good standard, minimum 2.4 inches (6 cm) caliper, and installed with approved root barriers, tree guards and appropriate soil. Root barriers shall be 8/2.4 m long and 18/450mm ht. Planting depth of root ball must be below sidewalk grade. New street trees to be confirmed prior to issuance of the building permit. Call Park Board for inspection after tree planting completion.