

# PROSCENIUM

ARCHITECTURE + INTERIORS INC.

1 WEST 7TH AVENUE P604.879.0118  
VANCOUVER BC V5Y 1L4 CANADA F604.879.1486  
www.proscenium.ca

LINE OF SKYTRAIN RAIL & SUPPORT ABOVE

NEW LETDOWN

PARKING/LOADING ENTRANCE

LINE OF (1525) LIGHT SHELF SUPPORT OVERHANG

LINE OF (915) LIGHT SHELF OVERHANG BELOW

FIRE TRUCK

CONCRETE SURFACE PATH

PRINCIPAL ENTRANCE/FIRE-TRUCK ACCESS

SIAMESE CONNECTION

POINT OF BUILDING HEIGHT MEASURE ABOVE BASE SURFACE

NEW FIRE HYDRANT LOCATION

PEDESTRIAN ENTRY WAY

LINE OF (915) LIGHT SHELF OVERHANG BELOW

LINE OF (1525) LIGHT SHELF SUPPORT OVERHANG

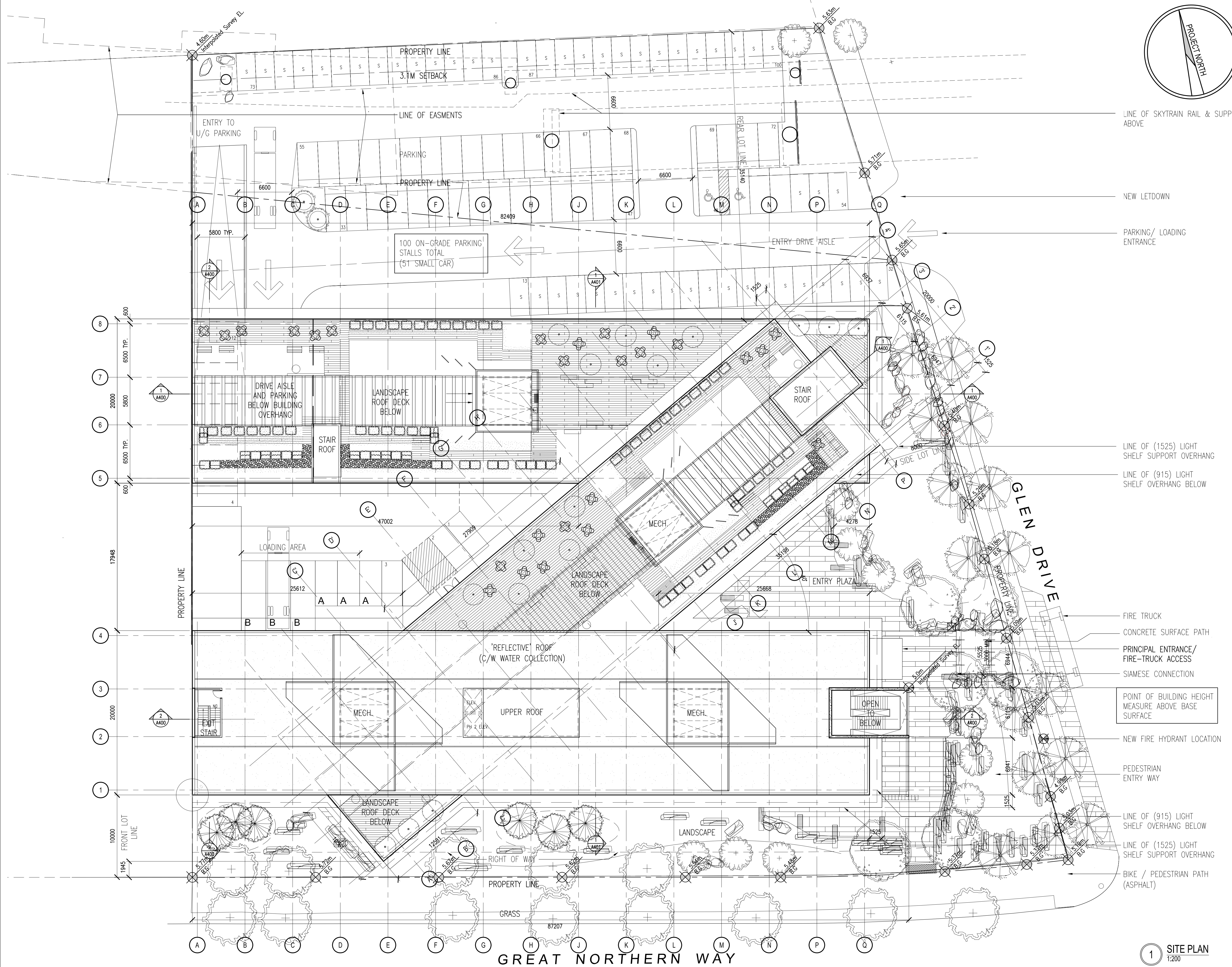
BIKE / PEDESTRIAN PATH (ASPHALT)

**SHARP & DIAMOND**  
Landscape Architecture & Planning  
602 - 1401 West Broadway Tel: 604.681.3303  
Vancouver, B.C. Fax: 604.681.3307  
Canada V6H 1H6 info@sharpdiamond.com

**kwl** KERR WOOD LEIDAL  
associates limited  
CONSULTING ENGINEERS

ALL OF THE DOCUMENTS PREPARED BY PROSCENIUM ARCHITECTURE + INTERIORS INC. OR ON BEHALF OF PROSCENIUM ARCHITECTURE + INTERIORS INC. IN CONNECTION WITH THE PROJECT ARE INSTRUMENTS OF SERVICE FOR THE EXECUTION OF THE PROJECT. PROSCENIUM ARCHITECTURE + INTERIORS INC. RETAINS THE PROPERTY AND COPYRIGHT IN THESE DOCUMENTS. WHETHER THE PROJECT IS EXECUTED OR NOT, THESE DOCUMENTS MAY NOT BE USED ON ANY OTHER PROJECT WITHOUT PRIOR WRITTEN AGREEMENT OF PROSCENIUM ARCHITECTURE + INTERIORS INC. DO NOT SCALE DRAWINGS.

- STRUCTURAL CONSULTANT: FAST + EPP STRUCTURAL ENGINEERS
- MECHANICAL/ELECTRICAL CONSULTANT: PAGEAU MOREL & ASSOCIATES
- LANDSCAPE CONSULTANT: SHARP & DIAMOND LANDSCAPE ARCHITECTURE
- GREEN BUILDING CONSULTANT: GREEN BUILDING CONSULTING & DESIGN
- ENVIRONMENTAL CONSULTANT: GOLDR ASSOCIATES LTD.
- CIVIL CONSULTANT: KWL ASSOCIATES LTD.
- ENERGY CONSULTANT: FVB ENERGY INC.
- SURVEY: BENNETT LAND SURVEYING LTD.



1 SITE PLAN  
1:200

| REV.                    | DESCRIPTIONS        | BY               | DATE     |
|-------------------------|---------------------|------------------|----------|
| A                       | ISSUED FOR REZONING | HC               | 11.06.24 |
| CAD FILE: 1019x100 PH 3 |                     | REVISION NO. [A] |          |

PROJECT  
**MEC HEAD OFFICE  
GREAT NORTHERN WAY**

PROJECT NUMBER  
**10-19**

DWG. NO.  
**A100  
PHIII**

DRAWING TITLE  
**SITE PLAN/GRADE  
PARKING**

DATE  
FEB. 2011

SCALE  
AS NOTED

DRAWN

CHECKED