

LANDSCAPE DESIGN CONCEPT

The landscape design concept responds to the context of the site in the West End and the idea of 'tower in the park'. The design incorporates a highly urban palette of materials and finishes while softening this urban character with a generously planted courtyard, a linear park and planted terraces.

The centre pieces of the design is the central courtyard that connects the two towers and their lobbies. This intimate courtyard is designed as a garden spaces with paths that guide the residents and visitors from the street and immerse them in a calm green space before leading them to the two tower lobbies. A similar experience is created at the mid-block connection east of the site. This connection is designed as a pocket park with a meandering paths that negotiates the grade change between Barclay and the lane with opportunities for pause and seating. The lobby entry for the social housing is located next to this mid-block green space.

Thurlow frontage is maintained as an urban landscape responding to the retail elements at the base of the building and providing opportunities for the retail spaces to spill out into the public realm.

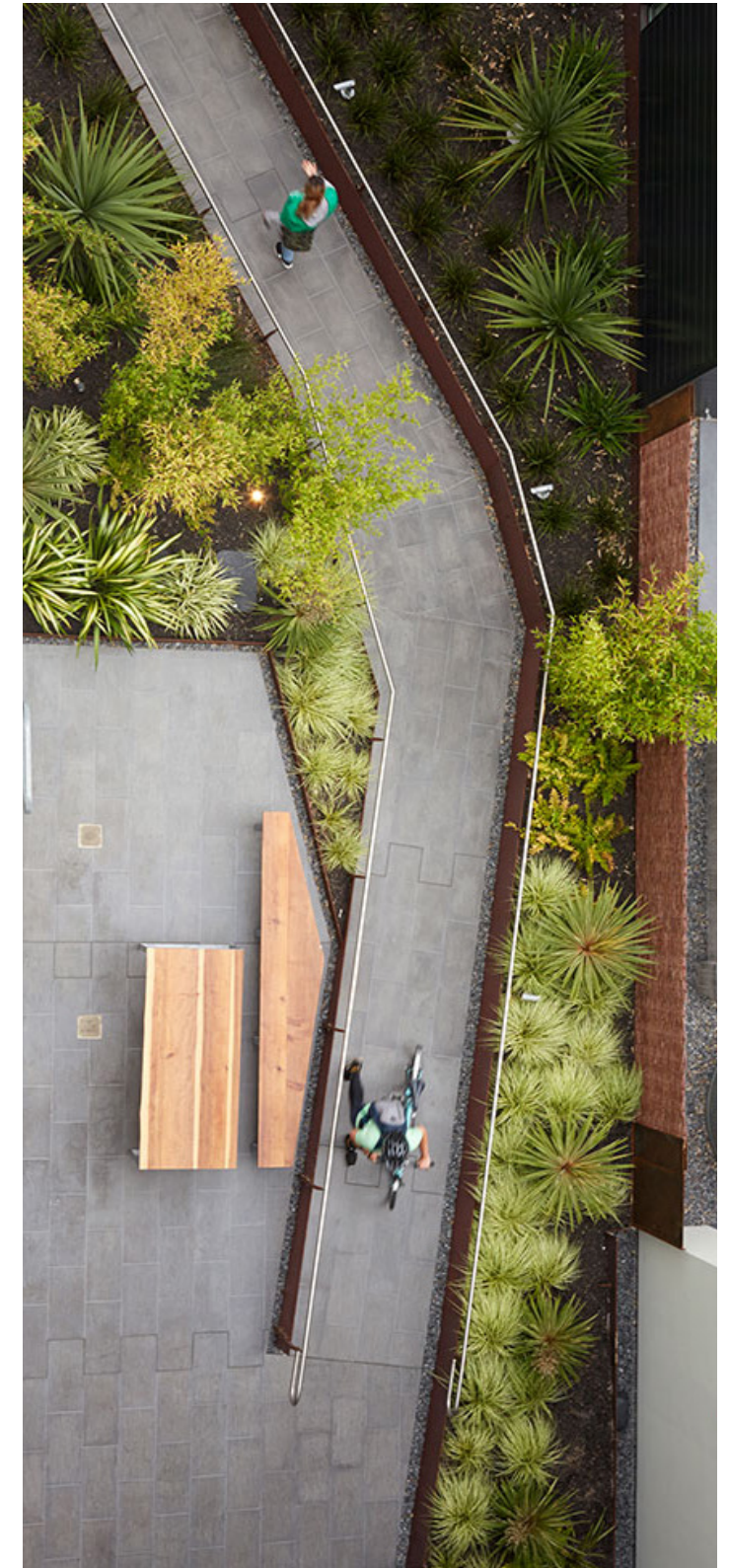
Existing mature trees along Barclay Street are being preserved. The design also proposes new street trees along Thurlow. The landscape of the site has simple approach to planting that envisions a treed landscape with lush but simple ground cover planting responding to the topography of the site.



Winding Path



Urban Agriculture

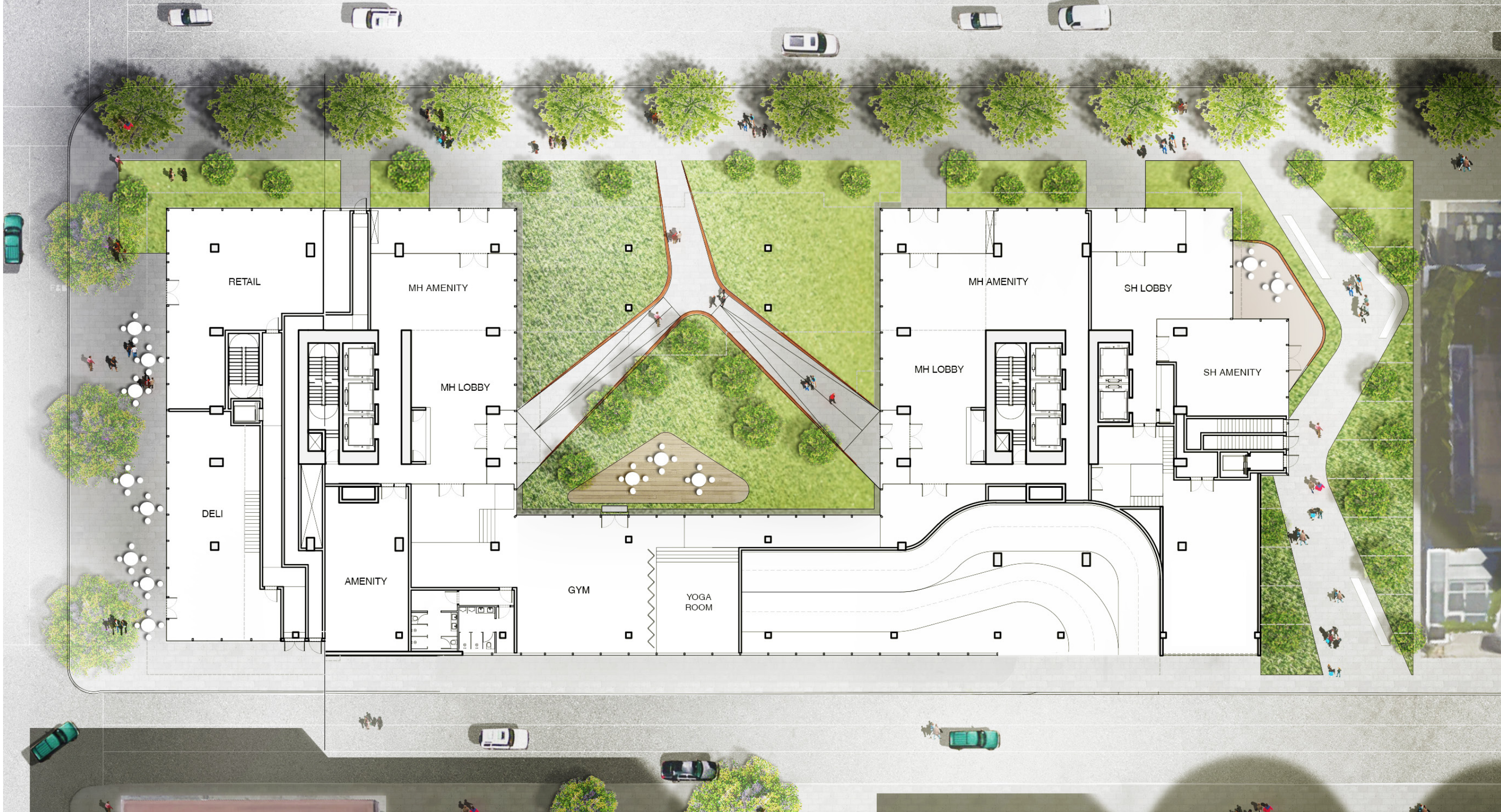


Hardscape and Soft scape



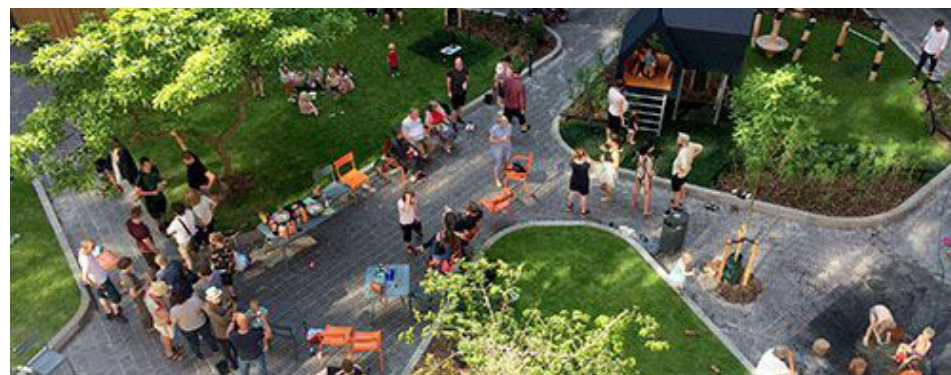
GROUND LANDSCAPE

L1&L1M LANDSCAPE PLAN



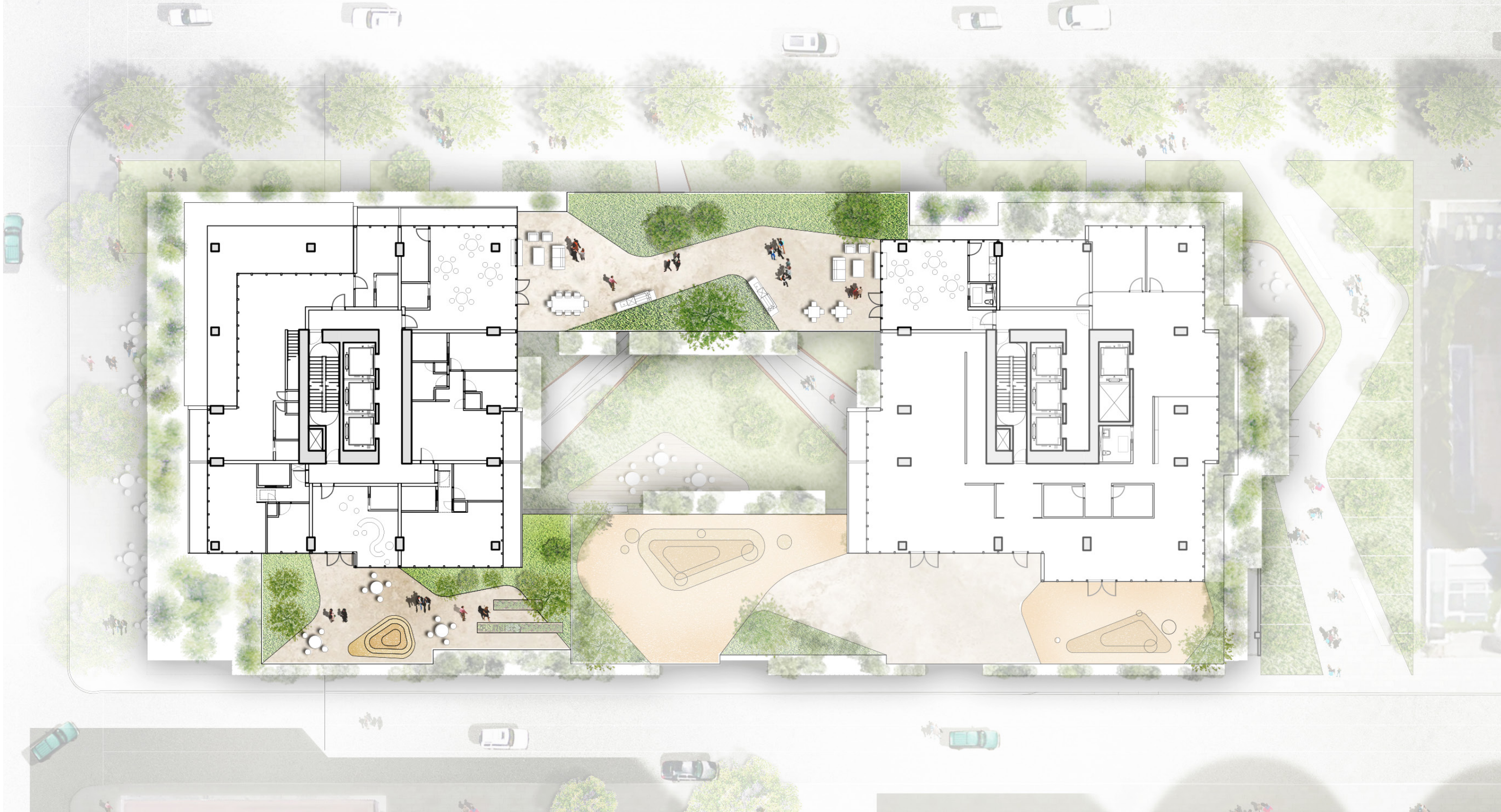
LANDSCAPE ELEVATION

ENTRANCE AND RETAIL FRONT



ROOF TOP AMENITY

L05 LANDSCAPE PLAN



NOTE: Daycare layout only for graphic purposes

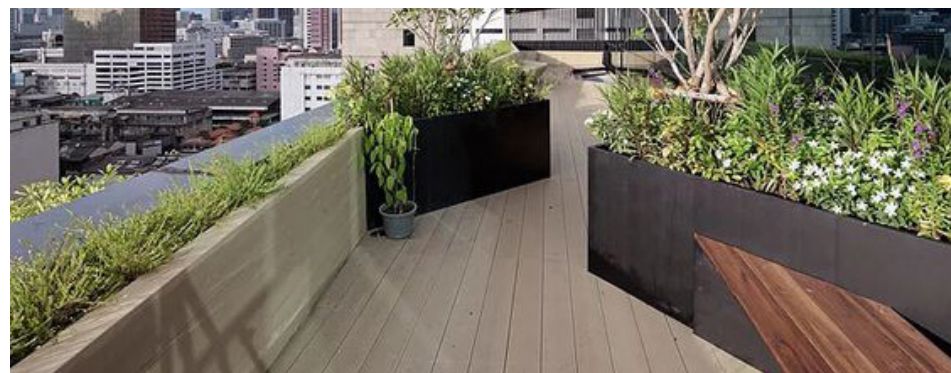
LANDSCAPE SECTION

CROSS SECTION THROUGH COURTYARD



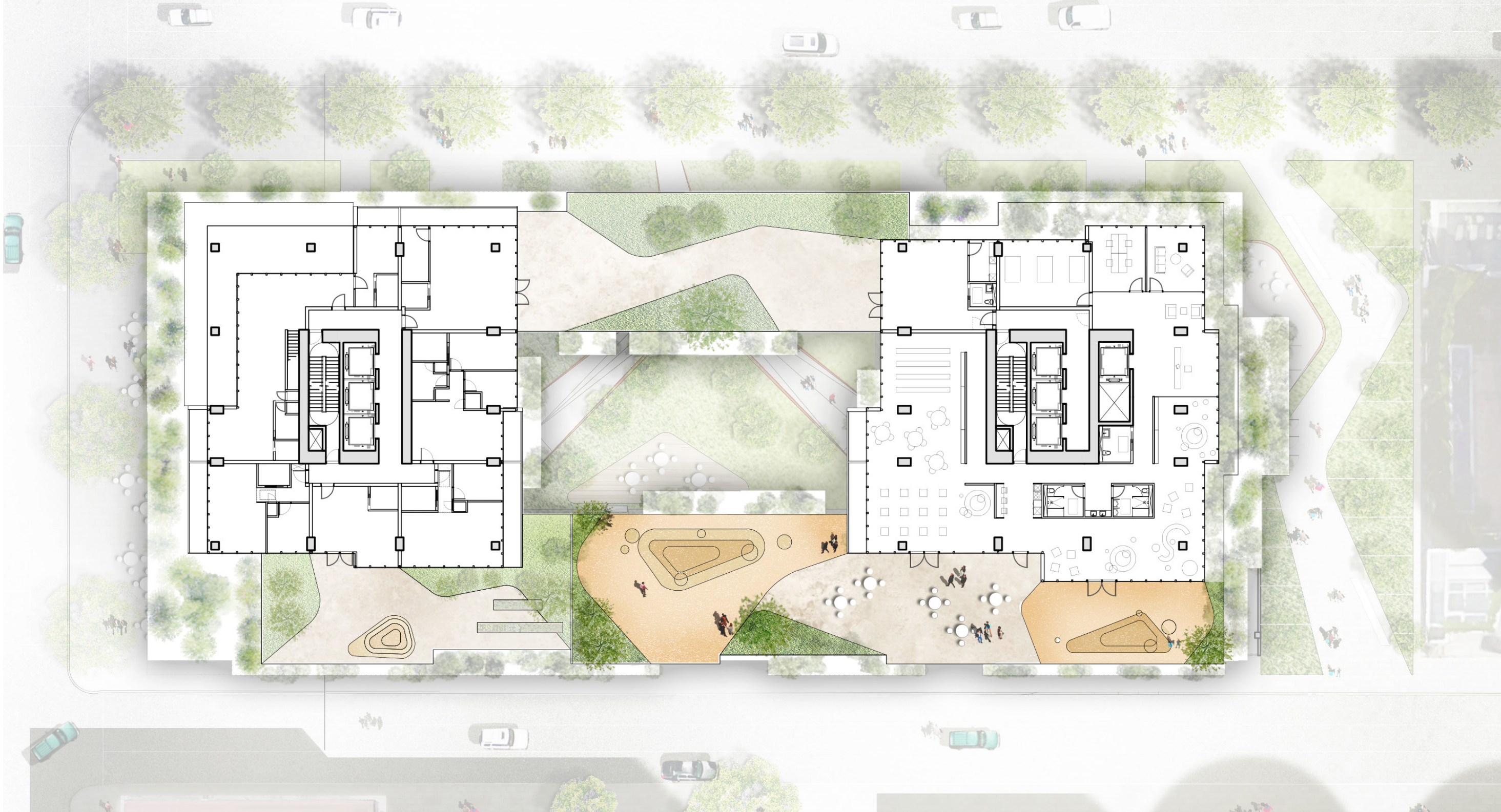
The rooftop spaces of the bridges that connect the towers are designed as amenity spaces market housing and as an outdoor space for the daycare centre. Rooftop of the north bridge accommodates outdoor amenity spaces for the market housing components in both tower. Located strategically to take the most advantage of a free flowing indoor / outdoor relationship, they include amenities such as outdoor BBQ areas, informal seating and dining spaces. A green space with a pathway connects these two spaces together creating a more flexible amenity space. Rooftop of the south bridge is dedicated to elements of urban agriculture and informal children's play areas taking advantage of the better access to sun light.

The idea of the garden-scape is extended to the rest of the tower mass with the inclusion of planters that add a layer of green to the tower facades. These will be planted with a combination of low growing evergreen and deciduous plants to create low maintenance and visually attractive green pockets.



ROOF TOP DAYCARE CENTRE

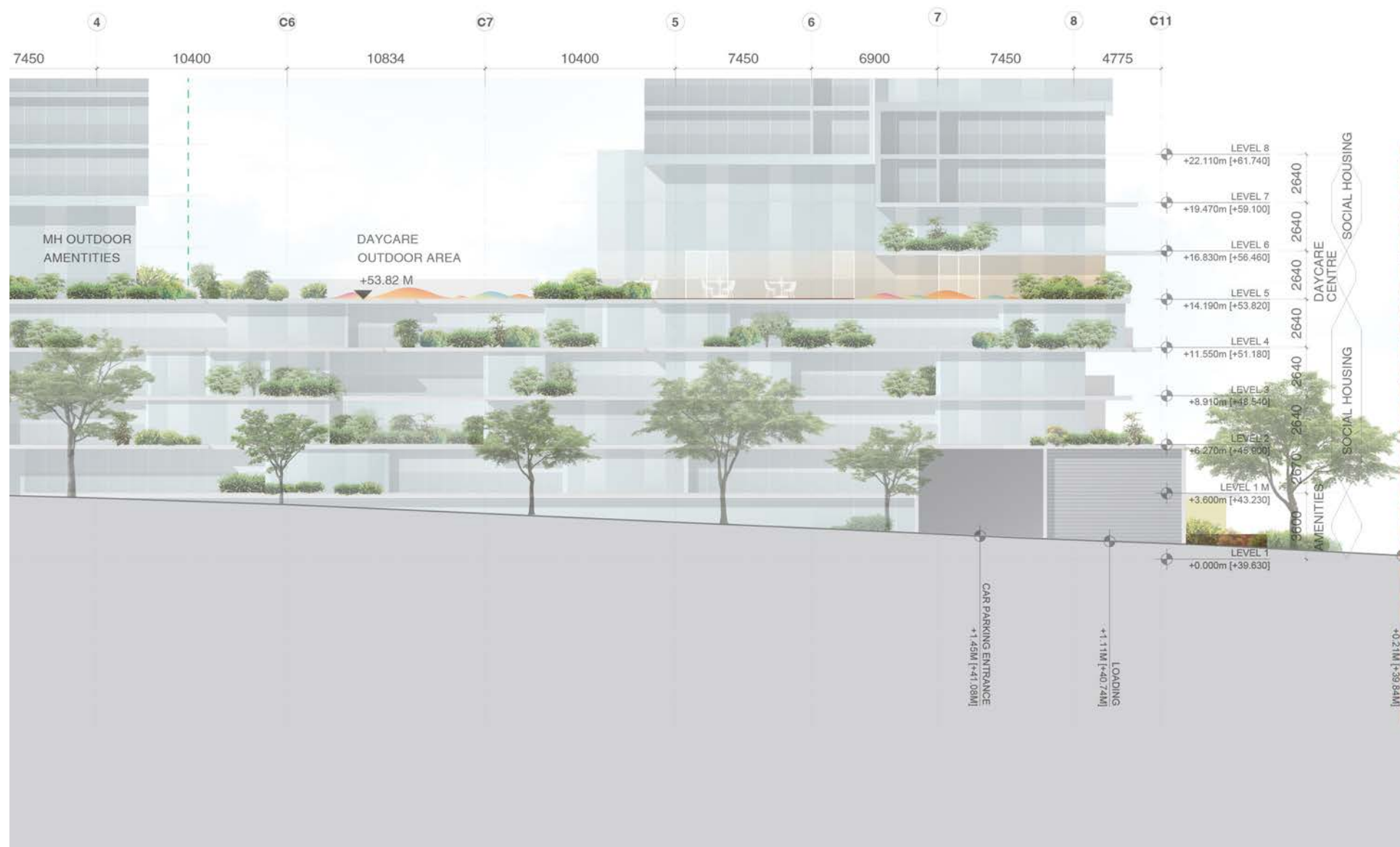
L05 LANDSCAPE PLAN



NOTE: Daycare layout only for graphic purposes

DAYCARE ELEVATION

LANE ELEVATION



Taking advantage of the southern exposure, a daycare centre with a sizable outdoor space is located on level 5, overflowing onto the roof of the southern bridge connector.

The daycare interior provides dedicated areas for different age ranges that are contiguously connected through shared communal spaces, in line with respective daycare guideline requirements.

The outdoor space is accessible from various indoor spaces, with play areas for different age groups connected directly from inside to outside. The location of the outdoor space allows for a good visual connection, free movement and surveillance opportunities from the interior spaces. Play areas, green spaces and multi-use areas are interspersed offering various uses based on operational requirements.

A generously planted area divides the daycare space from the adjacent outdoor amenity for market housing and shields the residential units in the West Tower.

The landscaped areas and playgrounds in general observe the following notes:

- Outdoor play areas will be designed to create a natural environment utilizing a variety of textures and natural materials.
- Dark colours will not be used for impervious and play surfaces to reduce heat island effects and protect children from hot surfaces. Very light and reflective material will be avoided.
- Plants material will be robust and their locations will be planned carefully to withstand the children activity. Plants will be non-toxic but use of edible plants for educational purposes can be considered.



LANDSCAPE SECTION

CROSS SECTION THROUGH LINK

