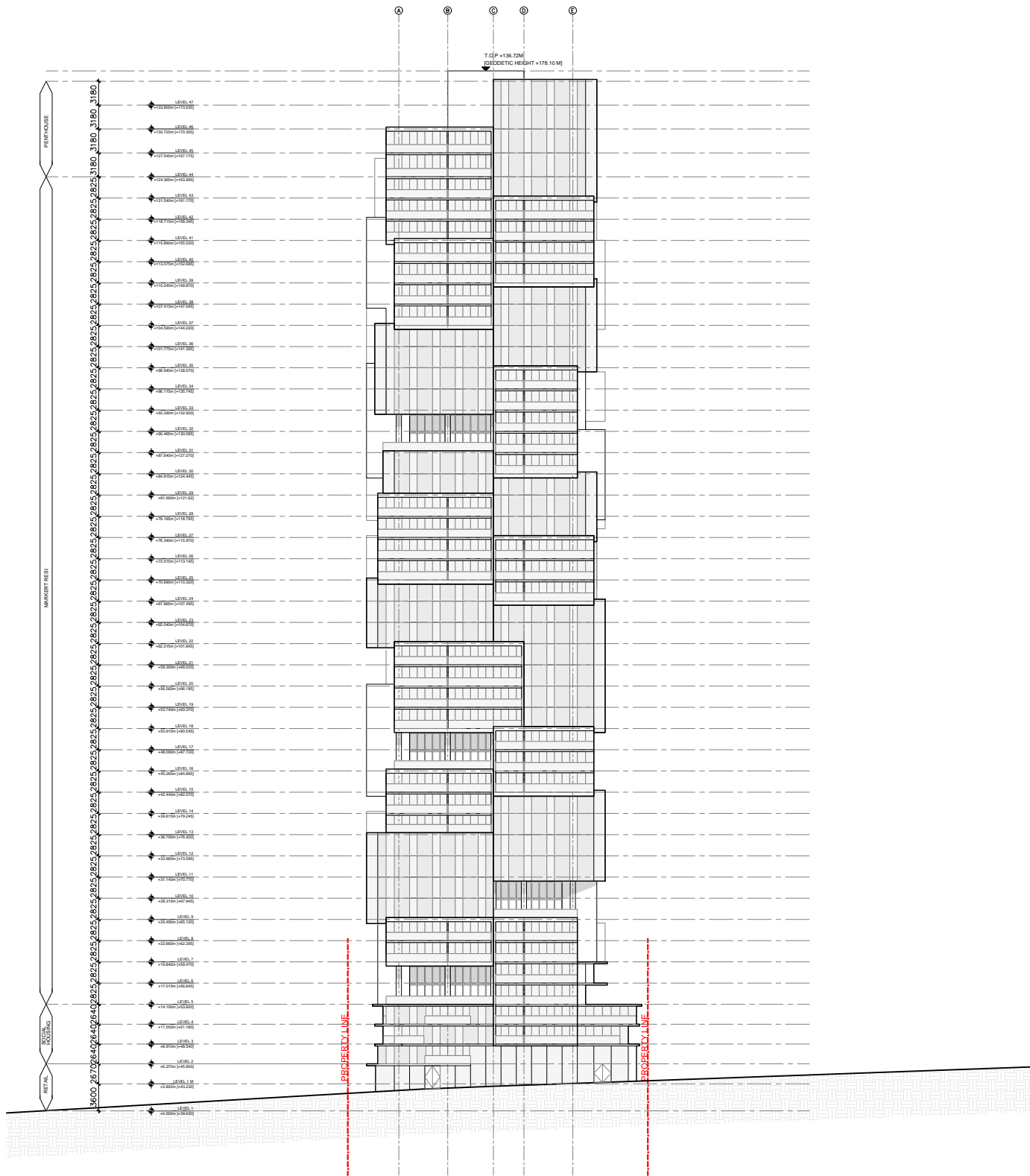
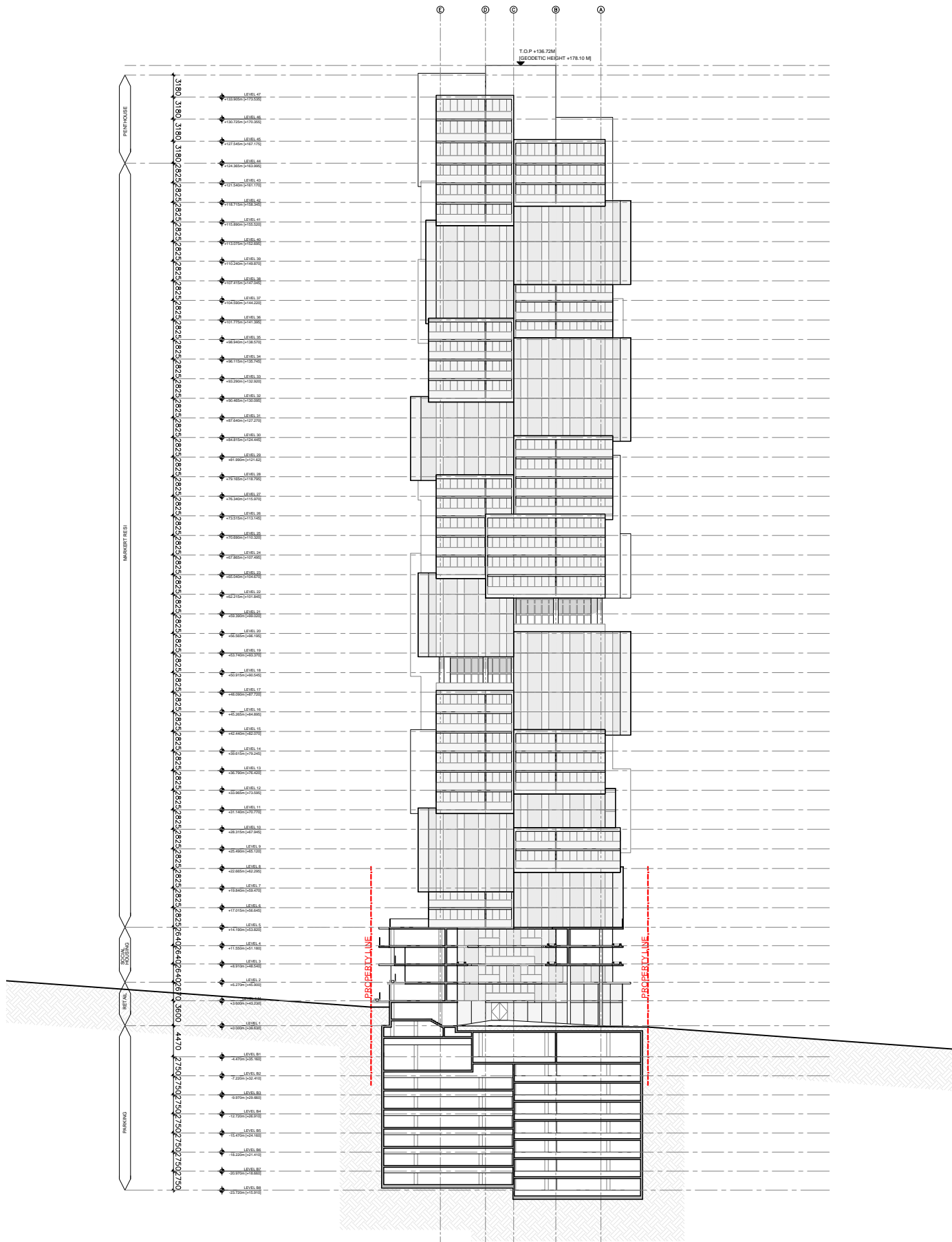


WEST TOWER



WEST TOWER



PROJECT



1070 BARCLAY STREET
WEST END, VANCOUVER,
BRITISH COLUMBIA, CANADA

CLIENT

BOSA BOSA PROPERTIES
1100 - 898 WEST HASTINGS STREET
VANCOUVER, BRITISH COLUMBIA
CANADA V6Y 6H6

KINGSWOOD PROPERTIES
710 W GEORGIA STREET
VANCOUVER, BRITISH COLUMBIA
CANADA V7Y 1A1

LEAD DESIGN CONSULTANT
BURO OLE SCHEEREN LIMITED
UNIT 2027 & TOWER TWO, LIPOO CENTER
81 QUEENSWAY, JOHANNESBURG
HONG KONG
TEL: +852 2323 8870
WWW.BURO-OLE.COM

COLLABORATING ARCHITECT
FRANCL ARCHITECTURE
1184 WEST 24th AVENUE
VANCOUVER, BRITISH COLUMBIA
CANADA V6K 5H4

STRUCTURAL CONSULTANT
GLOTMAN-SIMPSON
1881 WEST 50th AVENUE
VANCOUVER, BRITISH COLUMBIA
CANADA V6U 1S6

LANDSCAPE CONSULTANT
PFS STUDIO
1777 WEST 34th AVENUE
VANCOUVER, BRITISH COLUMBIA
CANADA V6J 1S7

TRAFFIC CONSULTANT
BUNT & ASSOCIATES
SUITE 100, 1000 WEST PENDER STREET
VANCOUVER, BRITISH COLUMBIA
CANADA V6E 3E7

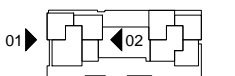
REV DATE DESCRIPTION

REV	DATE	DESCRIPTION

NOT FOR CONSTRUCTION

DO NOT SCALE FROM DRAWING. ALL DIMENSIONS MUST BE VERIFIED ON SITE. THIS DOCUMENT CONTAINS COPYRIGHTED MATERIAL. ANY UNAUTHORIZED USE, DISCLOSURE, DISSEMINATION OR DUPLICATION OF ANY OF THE INFORMATION CONTAINED HEREIN MAY RESULT IN LIABILITY UNDER APPLICABLE LAWS.

KEY PLAN



TITLE
WEST TOWER ELEVATIONS

PROJ. BARC DRAWN BY JZ

SCALE 1:750 CHECKED BY CH

PAPER SIZE 11X17 PHASE RZS

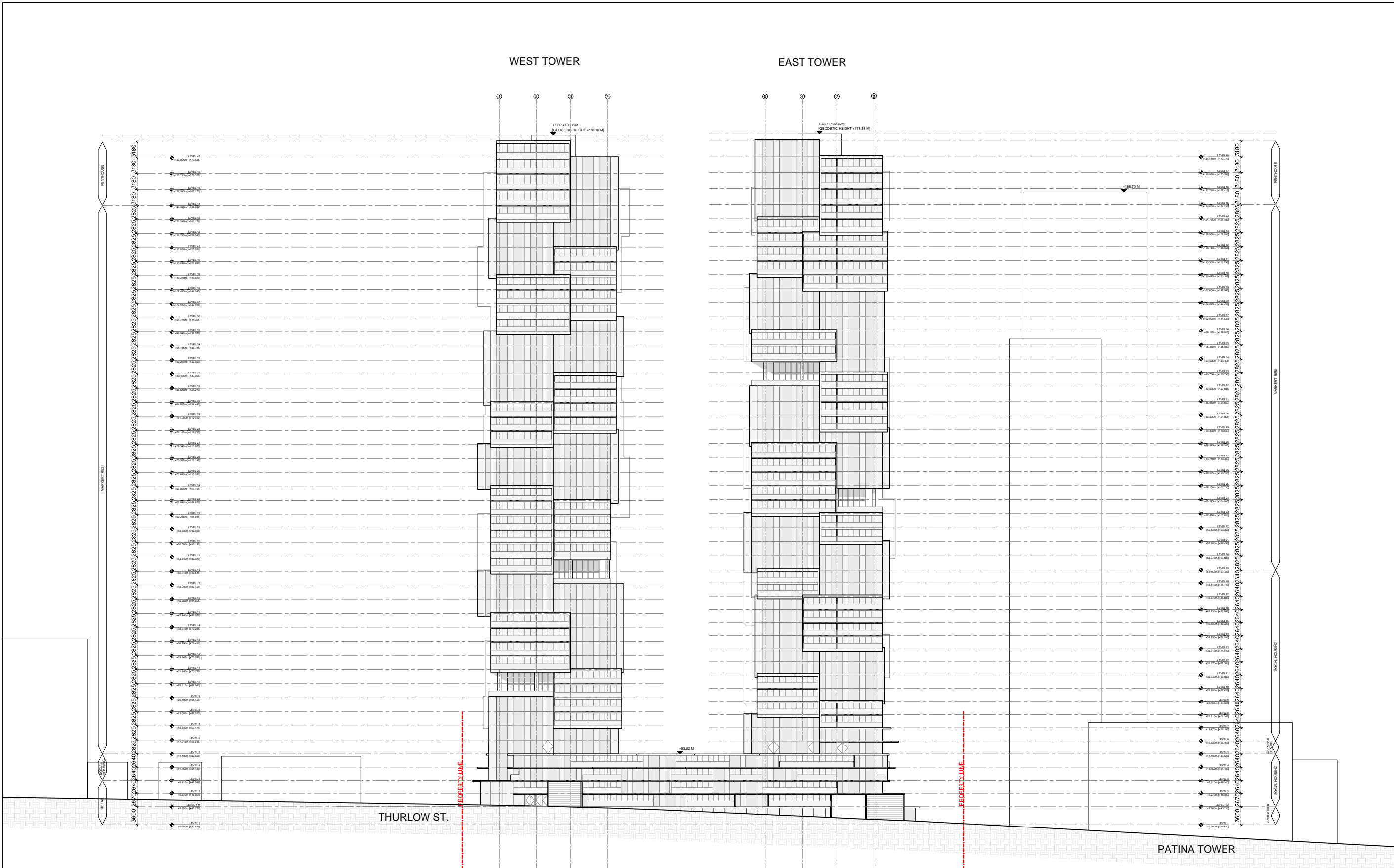
DATE 09/02/2018 REVISION

DRAWING NO.

A-17-002

WEST TOWER

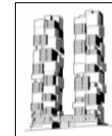
EAST TOWER



THURLOW ST.

PATINA TOWER

PROJECT



1070 BARCLAY STREET
WEST END, VANCOUVER
BRITISH COLUMBIA, CANADA

CLIENT

BOSA BOSA PROPERTIES
1100 - 408, WEST HASTINGS STREET
VANCOUVER, BRITISH COLUMBIA
CANADA V6Y 0A6



KINGSWOOD PROPERTIES
701 W. GEORGIA STREET
VANCOUVER, BRITISH COLUMBIA
CANADA V7Y 1A1

LEAD DESIGN CONSULTANT

BURO OLE SCHEEREN LIMITED
UNIT 2017 & TOWER TWO, LIPO CENTER
60 QUEENSWAY, JARVIS HILL
HONG KONG
TEL: +852 230 9870
WWW.BURO-OS.COM

COLLABORATING ARCHITECT

FRANCL ARCHITECTURE
1884 WEST 2ND AVENUE
VANCOUVER, BRITISH COLUMBIA
CANADA V6J 1N4

STRUCTURAL CONSULTANT

GLOTMAN-SIMPSON
1881 WEST 5th AVENUE
VANCOUVER, BRITISH COLUMBIA
CANADA V6J 1R5

LANDSCAPE CONSULTANT

PFS STUDIO
1777 WEST 3rd AVENUE
VANCOUVER, BRITISH COLUMBIA
CANADA V6J 1S7

TRAFFIC CONSULTANT

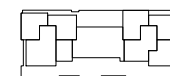
BUNT & ASSOCIATES
SUITE 100, 100 WEST PENDER STREET
VANCOUVER, BRITISH COLUMBIA
CANADA V6C 2R7

REV	DATE	DESCRIPTION

NOT FOR CONSTRUCTION

DO NOT SCALE FROM DRAWING. ALL DIMENSIONS MUST BE VERIFIED ON SITE. THIS DOCUMENT CONTAINS COPYRIGHTED MATERIAL. ANY UNAUTHORIZED USE, DISCLOSURE, DIVERSIFICATION OR DUPLICATION OF ANY OF THE INFORMATION CONTAINED HEREIN MAY RESULT IN LIABILITY UNDER APPLICABLE LAWS.

KEY PLAN



TITLE
LANE/SOUTH ELEVATION

PROJ.	BARC	DRAWN BY	JZ
SCALE	1:750	CHECKED BY	CH
PAPER SIZE	11X17	PHASE	RZS
DATE	09/02/2018	REVISION	

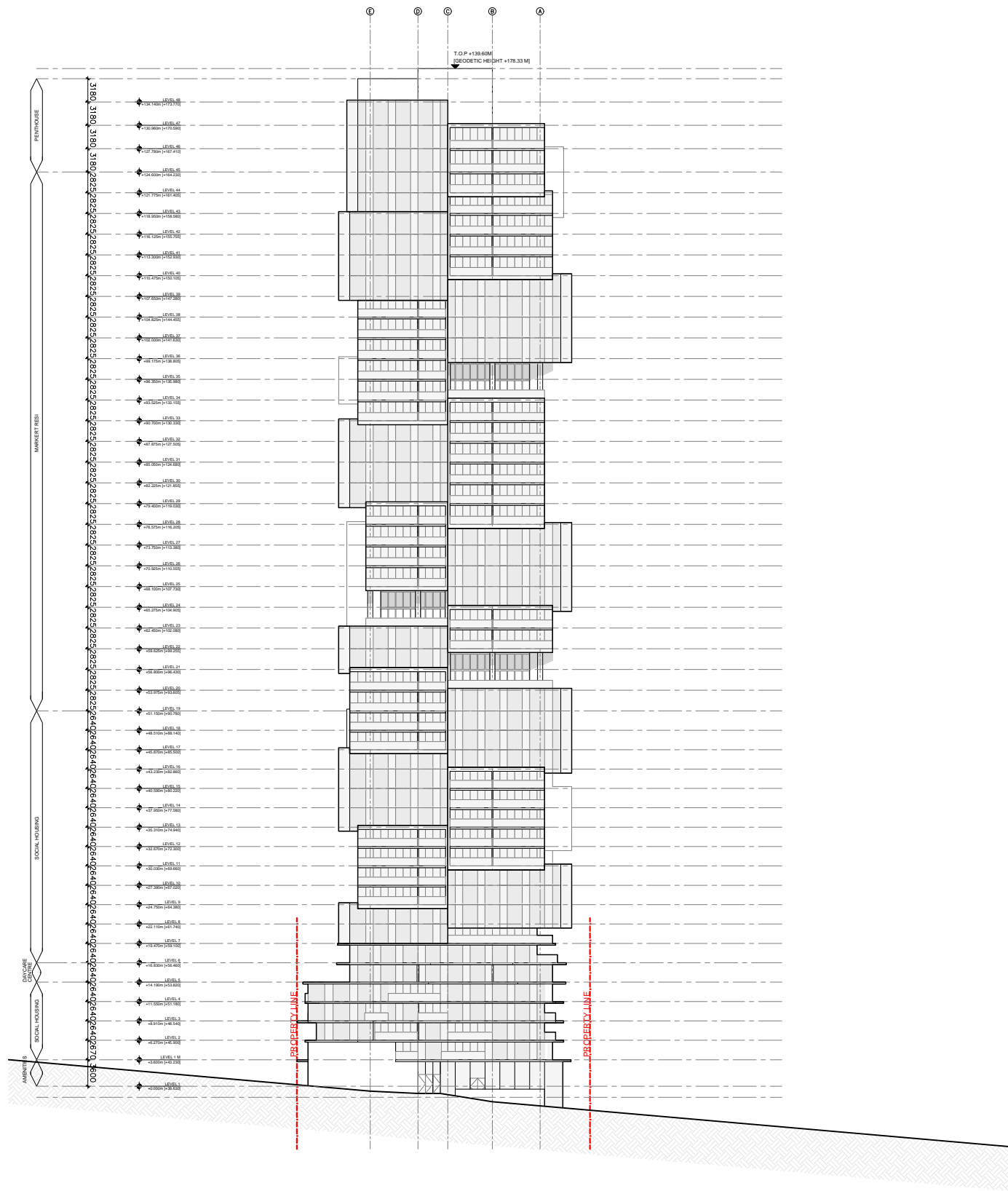
DRAWING NO.

A-17-003

TITLE: THURLOW STREET/WEST ELEVATION

SCALE: AS NOTED

EAST TOWER

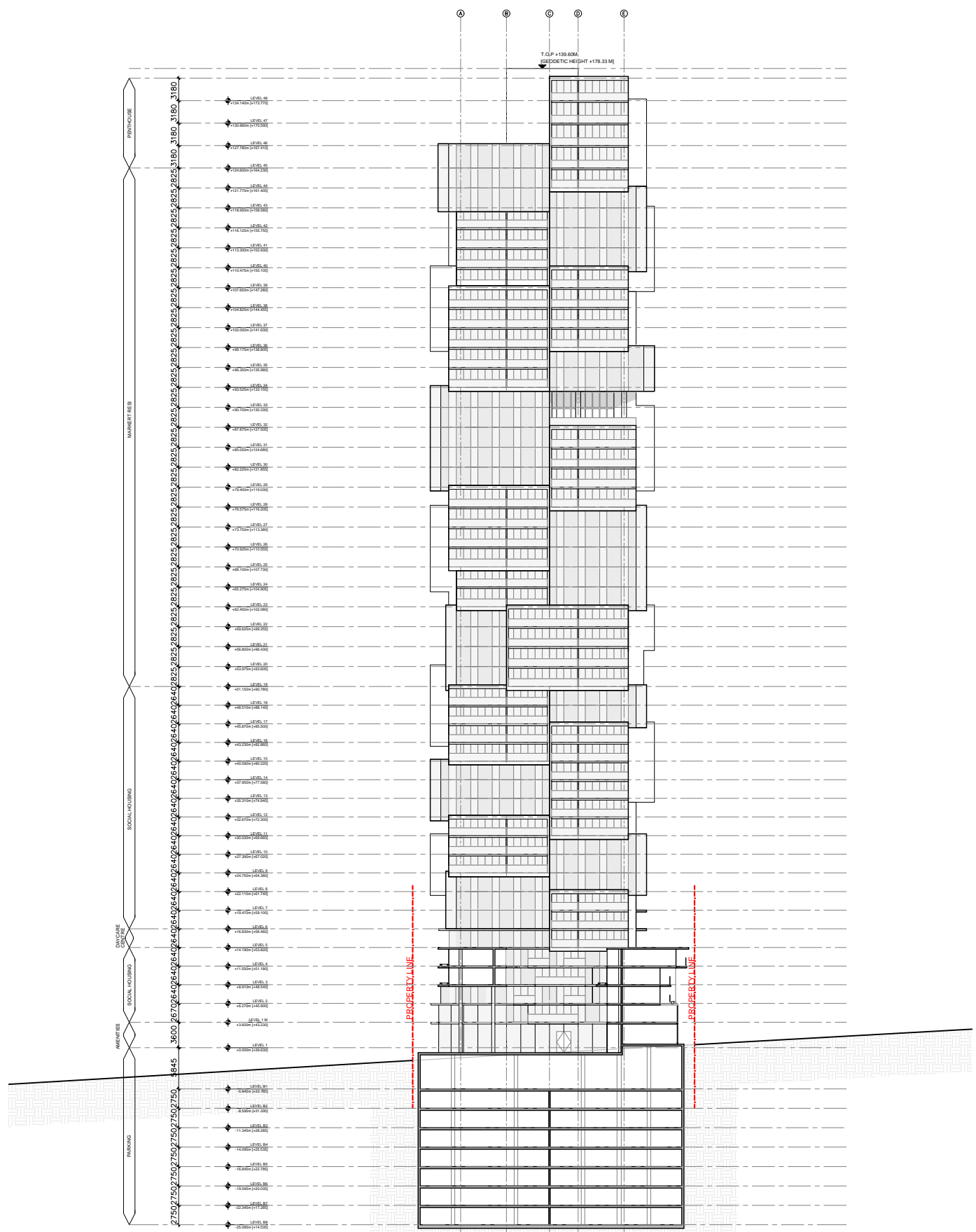


01

TITLE: COURTYARD/WEST ELEVATION

SCALE: AS NOTED

EAST TOWER



02

PROJECT



1070 BARCLAY STREET
WEST END, VANCOUVER
BRITISH COLUMBIA, CANADA

CLIENT

BOSA BOSA PROPERTIES
1100 - 408 WEST HASTINGS STREET
VANCOUVER, BRITISH COLUMBIA
CANADA V7Y 6J6

KINGSWOOD PROPERTIES
710 W GEORGIA STREET
VANCOUVER, BRITISH COLUMBIA
CANADA V7Y 1A1

LEAD DESIGN CONSULTANT
Buro Ole Scheeren BURRO OLE SCHEEREN LIMITED
81 QUEENSWAY, 20/F
HONG KONG
TEL: +852 2202 9870
WWW.BURO-OS.COM

COLLABORATING ARCHITECT
FRANCL ARCHITECTURE
1884 WEST 24th AVENUE
VANCOUVER, BRITISH COLUMBIA
CANADA V6L 1N4

STRUCTURAL CONSULTANT
GLT GLOTTMAN-SIMPSON
1881 WEST 50th AVENUE
VANCOUVER, BRITISH COLUMBIA
CANADA V6L 1S5

LANDSCAPE CONSULTANT
PFS STUDIO
1777 WEST 34th AVENUE
VANCOUVER, BRITISH COLUMBIA
CANADA V6L 1S7

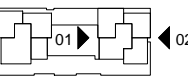
TRAFFIC CONSULTANT
BUNT & ASSOCIATES
SUITE 100, 1056 WEST PENDER STREET
VANCOUVER, BRITISH COLUMBIA
CANADA V6C 3E7

REV	DATE	DESCRIPTION

NOT FOR CONSTRUCTION

DO NOT SCALE FROM DRAWING. ALL DIMENSIONS MUST BE VERIFIED ON SITE. THIS DOCUMENT CONTAINS COPYRIGHTED MATERIAL. ANY UNAUTHORIZED USE, DISCLOSURE, REPRODUCTION OR DUPLICATION OF ANY OF THE INFORMATION CONTAINED HEREIN MAY RESULT IN LIABILITY UNDER APPLICABLE LAWS.

KEY PLAN



TITLE
EAST TOWER ELEVATIONS

PROJ.	BARC	DRAWN BY	JZ
SCALE	1:750	CHECKED BY	CH
PAPER SIZE	11X17	PHASE	RZS
DATE	09/02/2018	REVISION	

DRAWING NO.

A-17-004

PROJECT



1070 BARCLAY STREET
WEST END, VANCOUVER,
BRITISH COLUMBIA, CANADA

CLIENT

BOSA BOSA PROPERTIES
1100 - 608 WEST HASTINGS STREET
VANCOUVER, BRITISH COLUMBIA
CANADA V6V 6H6

KINGSWOOD PROPERTIES
710 W GEORGIA STREET
VANCOUVER, BRITISH COLUMBIA
CANADA V7Y 1A1

LEAD DESIGN CONSULTANT

BURO OLE SCHEEREN LIMITED
UNIT 2007 & TOWER TWO, LIPO CENTER
60 QUEENSWAY, KOWLOON, HONG KONG
TEL: +852 2392 8870
WWW.BURO-OS.COM

COLLABORATING ARCHITECT

FRANCL ARCHITECTURE
1884 WEST 24th AVENUE
VANCOUVER, BRITISH COLUMBIA
CANADA V6J 1N4

STRUCTURAL CONSULTANT

GLOTMAN-SIMPSON
1881 WEST 5th AVENUE
VANCOUVER, BRITISH COLUMBIA
CANADA V6J 1K6

LANDSCAPE CONSULTANT

PFS STUDIO
1777 WEST 34th AVENUE
VANCOUVER, BRITISH COLUMBIA
CANADA V6L 1S7

TRAFFIC CONSULTANT

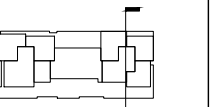
BUNT & ASSOCIATES
SUITE 1006, 1008 WEST PENDER STREET
VANCOUVER, BRITISH COLUMBIA
CANADA V6E 3E7

REV	DATE	DESCRIPTION

NOT FOR CONSTRUCTION

DO NOT SCALE FROM DRAWING. ALL DIMENSIONS MUST BE VERIFIED ON SITE. THIS DOCUMENT CONTAINS COPYRIGHTED MATERIAL. ANY UNAUTHORIZED USE, DISCLOSURE, DISTRIBUTION OR DUPLICATION OF ANY OF THE INFORMATION CONTAINED HEREIN MAY RESULT IN LIABILITY UNDER APPLICABLE LAWS.

KEY PLAN

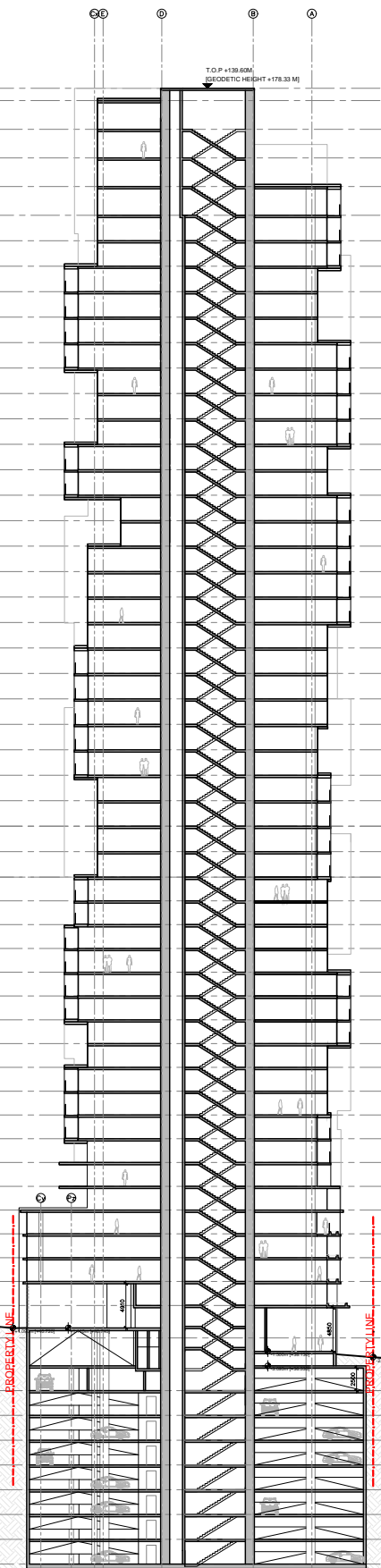


TITLE
SECTION BB ALONG THURLOW STREET

PROJ. BARC	DRAWN BY JZ
SCALE 1:750	CHECKED BY CH
PAPERSIZE 11X17	PHASE RZS
DATE 09/02/2018	REVISION

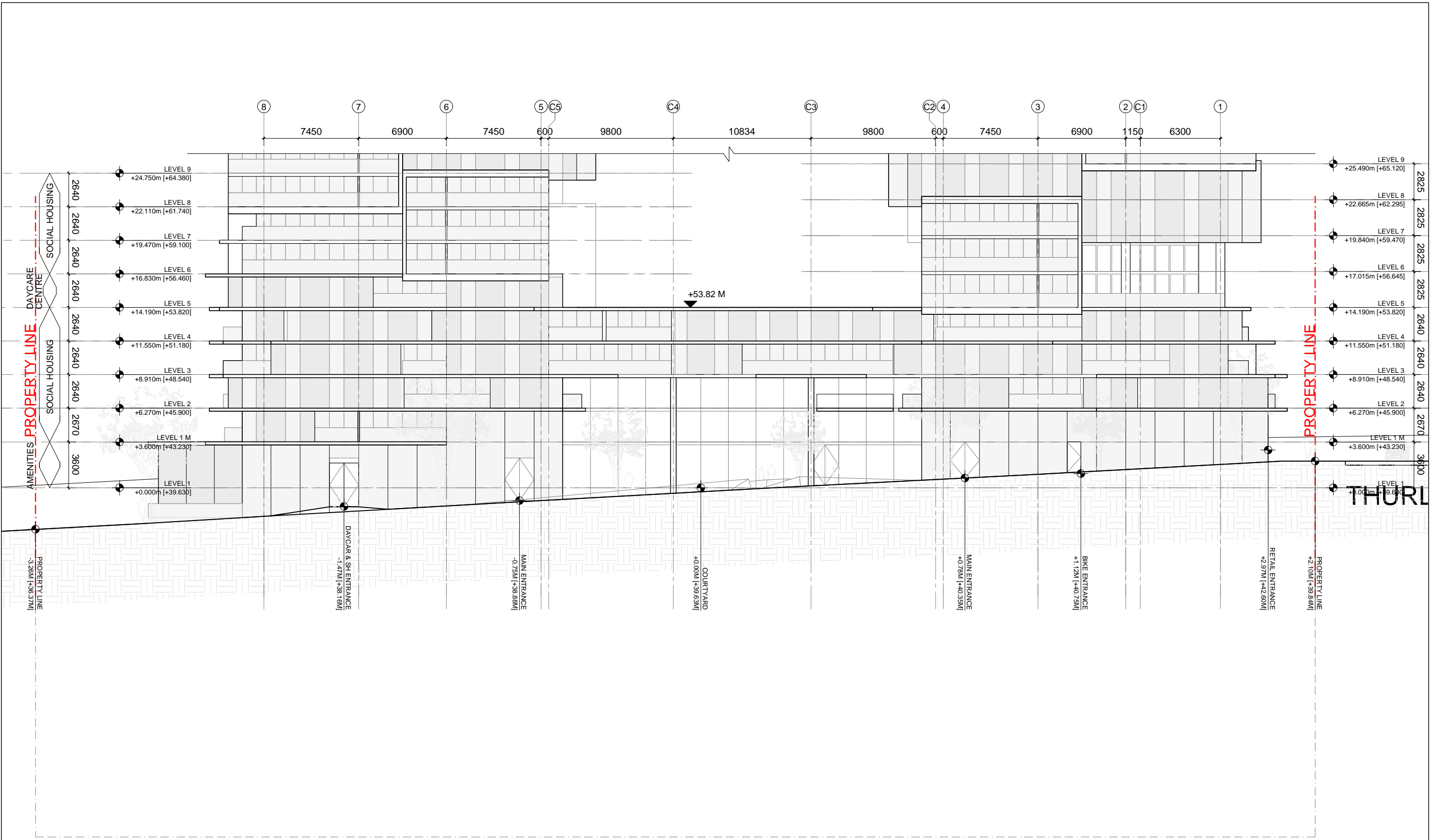
DRAWING NO.
A-18-002

EAST TOWER



LEVEL 48 (+183.100) / 3180.0
LEVEL 47 (+183.000) / 3178.0
LEVEL 46 (+182.900) / 3176.0
LEVEL 45 (+182.800) / 3174.0
LEVEL 44 (+182.700) / 3172.0
LEVEL 43 (+182.600) / 3170.0
LEVEL 42 (+182.500) / 3168.0
LEVEL 41 (+182.400) / 3166.0
LEVEL 40 (+182.300) / 3164.0
LEVEL 39 (+182.200) / 3162.0
LEVEL 38 (+182.100) / 3160.0
LEVEL 37 (+182.000) / 3158.0
LEVEL 36 (+181.900) / 3156.0
LEVEL 35 (+181.800) / 3154.0
LEVEL 34 (+181.700) / 3152.0
LEVEL 33 (+181.600) / 3150.0
LEVEL 32 (+181.500) / 3148.0
LEVEL 31 (+181.400) / 3146.0
LEVEL 30 (+181.300) / 3144.0
LEVEL 29 (+181.200) / 3142.0
LEVEL 28 (+181.100) / 3140.0
LEVEL 27 (+181.000) / 3138.0
LEVEL 26 (+180.900) / 3136.0
LEVEL 25 (+180.800) / 3134.0
LEVEL 24 (+180.700) / 3132.0
LEVEL 23 (+180.600) / 3130.0
LEVEL 22 (+180.500) / 3128.0
LEVEL 21 (+180.400) / 3126.0
LEVEL 20 (+180.300) / 3124.0
LEVEL 19 (+180.200) / 3122.0
LEVEL 18 (+180.100) / 3120.0
LEVEL 17 (+180.000) / 3118.0
LEVEL 16 (+179.900) / 3116.0
LEVEL 15 (+179.800) / 3114.0
LEVEL 14 (+179.700) / 3112.0
LEVEL 13 (+179.600) / 3110.0
LEVEL 12 (+179.500) / 3108.0
LEVEL 11 (+179.400) / 3106.0
LEVEL 10 (+179.300) / 3104.0
LEVEL 9 (+179.200) / 3102.0
LEVEL 8 (+179.100) / 3100.0
LEVEL 7 (+179.000) / 3098.0
LEVEL 6 (+178.900) / 3096.0
LEVEL 5 (+178.800) / 3094.0
LEVEL 4 (+178.700) / 3092.0
LEVEL 3 (+178.600) / 3090.0
LEVEL 2 (+178.500) / 3088.0
LEVEL 1 (+178.400) / 3086.0
LEVEL 0 (+178.300) / 3084.0
LEVEL -1 (+178.200) / 3082.0
LEVEL -2 (+178.100) / 3080.0
LEVEL -3 (+178.000) / 3078.0
LEVEL -4 (+177.900) / 3076.0
LEVEL -5 (+177.800) / 3074.0
LEVEL -6 (+177.700) / 3072.0
LEVEL -7 (+177.600) / 3070.0
LEVEL -8 (+177.500) / 3068.0
LEVEL -9 (+177.400) / 3066.0
LEVEL -10 (+177.300) / 3064.0

RENTHOUSE
MARKET FEE
CENTRE
SOCIAL LOUNGE
SOCIAL LOUNGE
MARKET
PARKING



CLIENT
BOSA PROPERTIES
1100 - 808 WEST HASTINGS STREET
VANCOUVER, BRITISH COLUMBIA
CANADA V6Y 0E6

KINGSDOWN PROPERTIES
715 W GEORGIA STREET
VANCOUVER, BRITISH COLUMBIA
CANADA V7Y 1A1

LEAD DESIGN CONSULTANT
BURO OLE SCHEEREN LIMITED
UNIT 2017 & TOWER TWO, LIPO CENTER
81 QUEENSWAY, AERIALITY
HONG KONG
TEL: +852 2302 8870
WWW.BURO-OLE.COM

COLLABORATING ARCHITECT
FRANCL ARCHITECTURE
1884 WEST 24th AVENUE
VANCOUVER, BRITISH COLUMBIA
CANADA V6J 1M4

STRUCTURAL CONSULTANT
GLOTMAN-SIMPSON
1881 WEST 50th AVENUE
VANCOUVER, BRITISH COLUMBIA
CANADA V6J 1S5

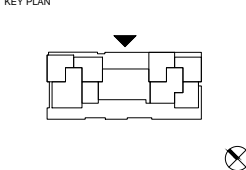
LANDSCAPE CONSULTANT
PFS STUDIO
1777 WEST 34th AVENUE
VANCOUVER, BRITISH COLUMBIA
CANADA V6J 1K7

TRAFFIC CONSULTANT
BUNT & ASSOCIATES
SUITE 1068, 1060 WEST PENDER STREET
VANCOUVER, BRITISH COLUMBIA
CANADA V6J 3E7

REV	DATE	DESCRIPTION

NOT FOR CONSTRUCTION

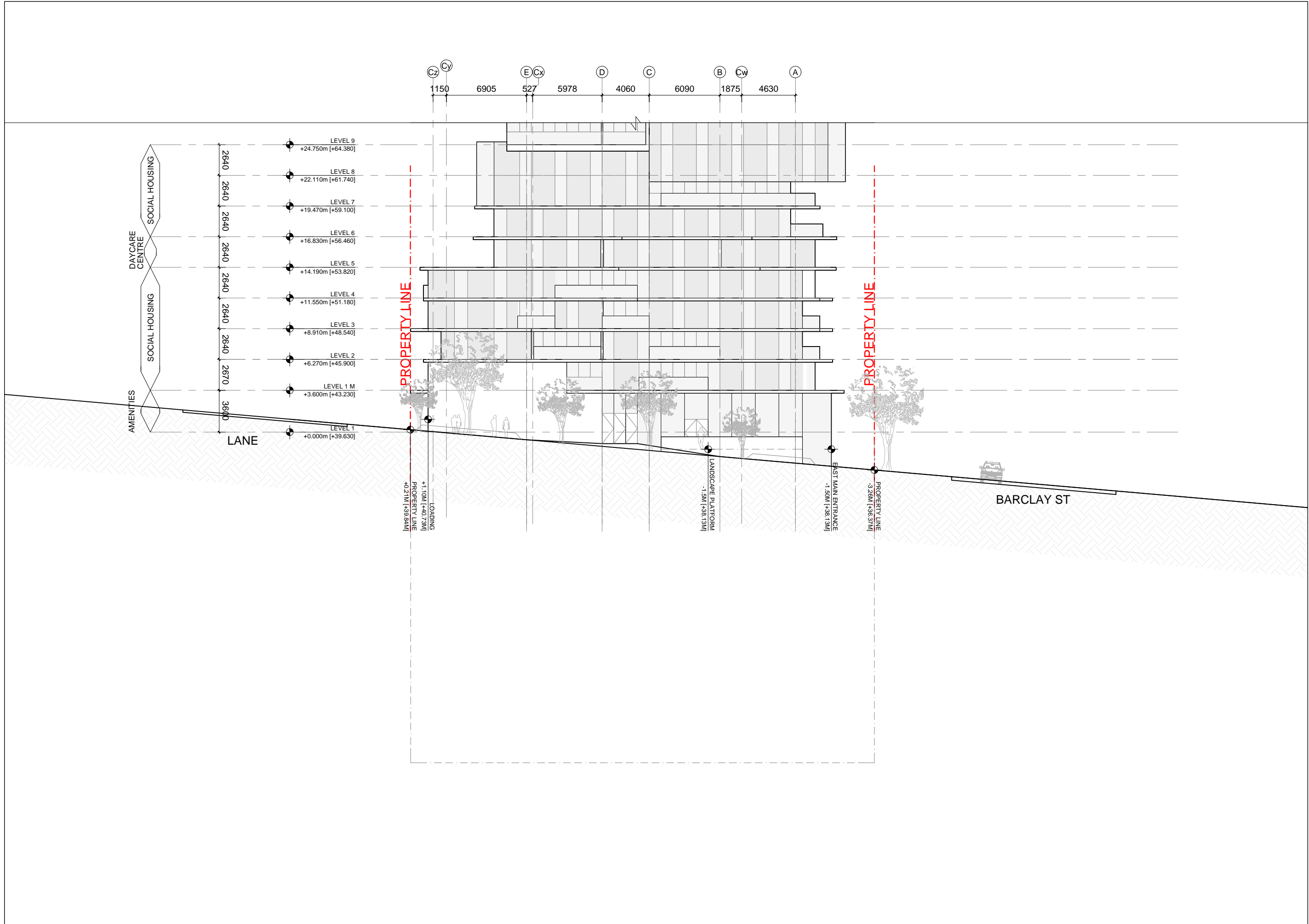
DO NOT SCALE FROM DRAWING. ALL DIMENSIONS MUST BE VERIFIED ON SITE. THIS DOCUMENT CONTAINS COPYRIGHTED MATERIAL. ANY UNAUTHORIZED USE, DISCLOSURE, DISEMINATION OR DUPLICATION OF ANY OF THE INFORMATION CONTAINED HEREIN MAY RESULT IN LIABILITY UNDER APPLICABLE LAWS.



TITLE
BARCLAY STREET/SOUTH
PARTIAL ELEVATION

PROJ.	DRAWN BY
BARC	JZ
SCALE	CHECKED BY
1:300	CH
PAPER SIZE	PHASE
11X17	RZS
DATE	REVISION
09/02/2018	

DRAWING NO.
A-26-001



PROJECT

 1070 BARCLAY STREET
 WEST END, VANCOUVER,
 BRITISH COLUMBIA, CANADA

CLIENT
BOSA BOSA PROPERTIES
 1100 - 608, WEST HASTINGS STREET
 VANCOUVER, BRITISH COLUMBIA,
 CANADA V6Y 0A8

 KINGSWOOD PROPERTIES
 710 W GEORGIA STREET
 VANCOUVER, BRITISH COLUMBIA,
 CANADA V7Y 1A1

LEAD DESIGN CONSULTANT
Buro Ole Scheeren BURU OLE SCHEEREN LIMITED
 UNIT 2017 B, TOWER TWO, LIPO CENTER
 81 QUEENSWAY, JARDIN VILLAGE
 HONG KONG
 TEL: +852 2202 8870
 WWW.BURO-OS.COM

COLLABORATING ARCHITECT
FRANCL FRANCEL ARCHITECTURE
 1884 WEST 24th AVENUE
 VANCOUVER, BRITISH COLUMBIA,
 CANADA V6J 1H4

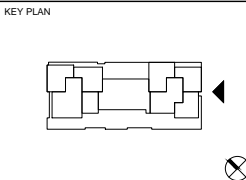
STRUCTURAL CONSULTANT
GTS GLOTMAN-SIMPSON
 1881 WEST 59th AVENUE
 VANCOUVER, BRITISH COLUMBIA,
 CANADA V6J 1R5

LANDSCAPE CONSULTANT
PFS STUDIO
 1777 WEST 34th AVENUE
 VANCOUVER, BRITISH COLUMBIA,
 CANADA V6J 1S7

TRAFFIC CONSULTANT
BUNT & ASSOCIATES
 SUITE 108, 106 WEST PENDER STREET
 VANCOUVER, BRITISH COLUMBIA,
 CANADA V6E 3E7

REV	DATE	DESCRIPTION

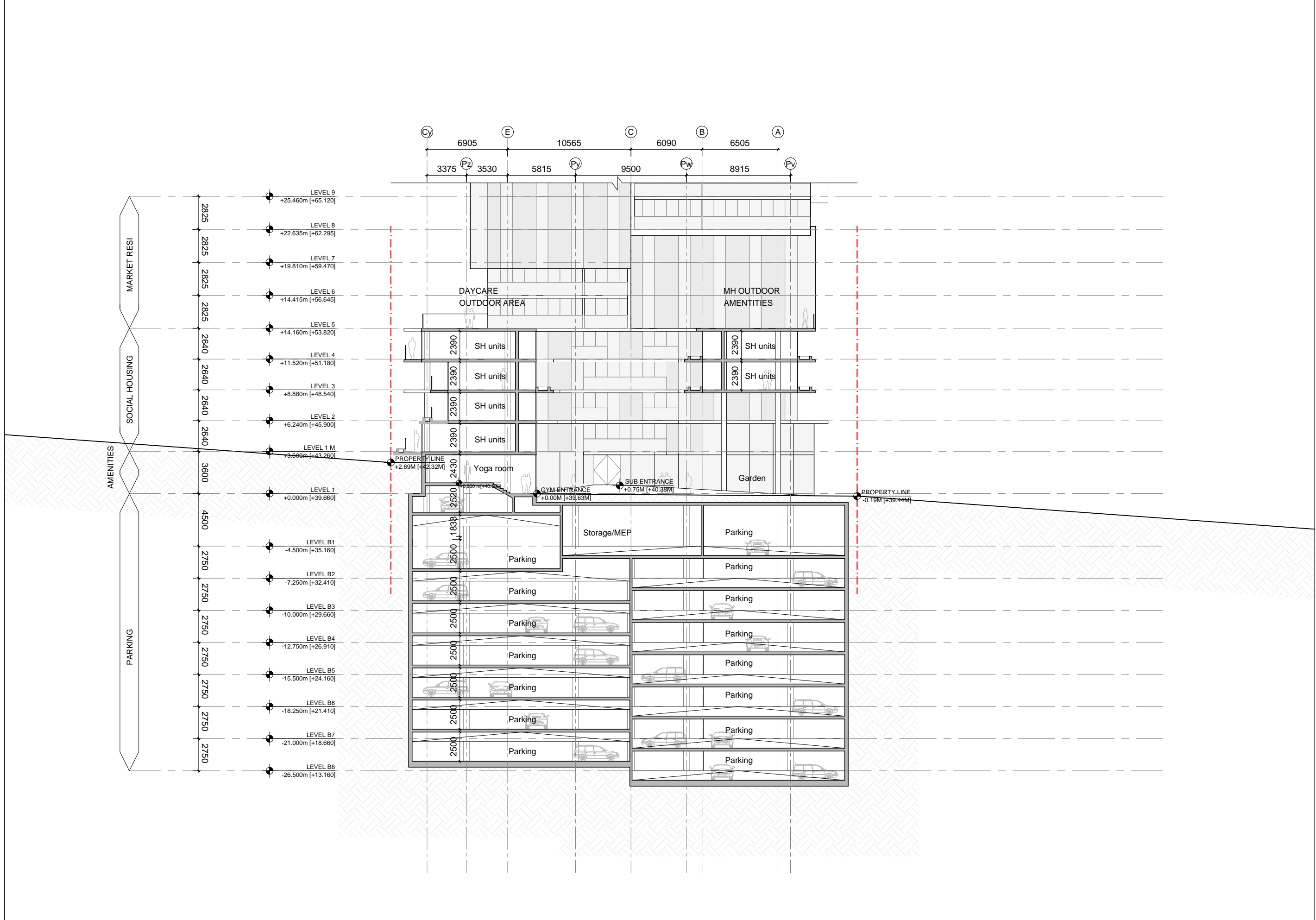
NOT FOR CONSTRUCTION
DO NOT SCALE FROM DRAWING. ALL DIMENSIONS MUST BE VERIFIED ON SITE. THIS DOCUMENT CONTAINS COPYRIGHTED MATERIAL. ANY UNAUTHORIZED USE, DISCLOSURE, DISSEMINATION OR DUPLICATION OF ANY OF THE INFORMATION CONTAINED HEREIN MAY RESULT IN LIABILITY UNDER APPLICABLE LAWS.



TITLE
 PATINA/EAST PARTIAL
 ELEVATION

PROJ. BARC	DRAWN BY JZ
SCALE 1:300	CHECKED BY CH
PAPER SIZE 11X17	PHASE RZS
DATE 09/02/2018	REVISION

DRAWING NO.
A-26-002



PROJECT

 1070 BARCLAY STREET
 WEST END, VANCOUVER,
 BRITISH COLUMBIA, CANADA

CLIENT

BOSA PROPERTIES
 1100 - 408, WEST HASTINGS STREET
 VANCOUVER, BRITISH COLUMBIA
 CANADA V6J 0K6

KINGSWOOD PROPERTIES
 715 W GEORGIA STREET
 VANCOUVER, BRITISH COLUMBIA
 CANADA V7Y 1A1

LEAD DESIGN CONSULTANT

BURO OLE SCHEEREN LIMITED
 UNIT 2007 & TOWER TWO, LIPO CENTER
 61 QUEENSWAY, JONAKHAY
 HONG KONG
 TEL: +852 2501 8870
 WWW.BURO-OS.COM

COLLABORATING ARCHITECT

FRANCL ARCHITECTURE
 1884 WEST 24 AVENUE
 VANCOUVER, BRITISH COLUMBIA
 CANADA V6J 1M4

STRUCTURAL CONSULTANT

GLOTMAN & SIMPSON
 1861 WEST 59 AVENUE
 VANCOUVER, BRITISH COLUMBIA
 CANADA V6J 1S2

LANDSCAPE CONSULTANT

PFS STUDIO
 1777 WEST 34 AVENUE
 VANCOUVER, BRITISH COLUMBIA
 CANADA V6J 1S7

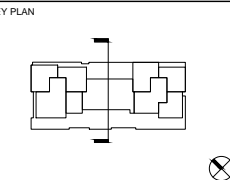
TRAFFIC CONSULTANT

BUNT & ASSOCIATES
 SUITE 1004, 100 WEST PENDER STREET
 VANCOUVER, BRITISH COLUMBIA
 CANADA V6E 3J7

REV	DATE	DESCRIPTION

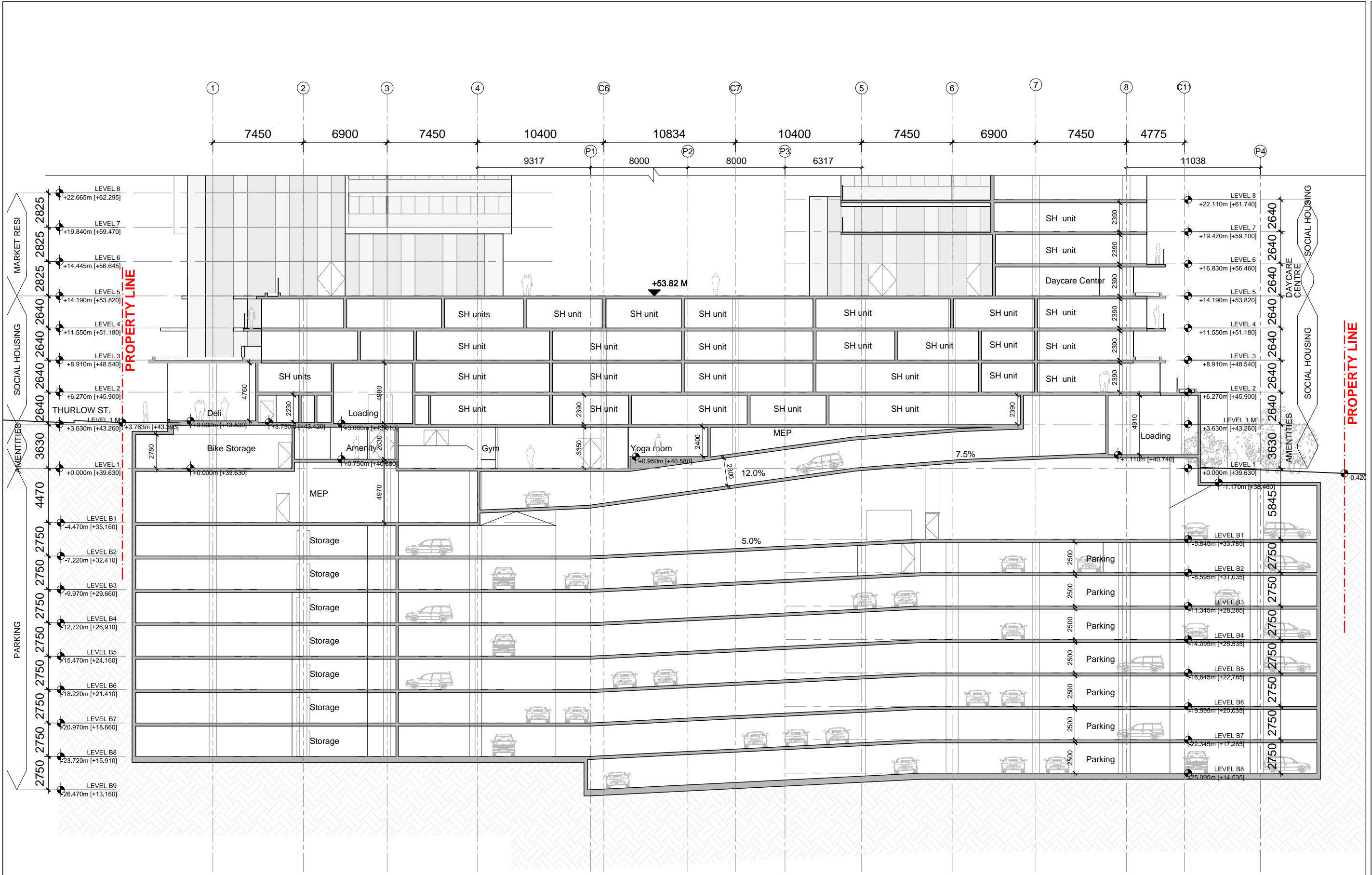
NOT FOR CONSTRUCTION

DO NOT SCALE FROM DRAWING. ALL DIMENSIONS MUST BE VERIFIED ON SITE. THIS DOCUMENT CONTAINS COPYRIGHTED MATERIAL. ANY UNAUTHORIZED USE, DISCLOSURE, DISTRIBUITION OR DUPLICATION OF ANY OF THE INFORMATION CONTAINED HEREIN MAY RESULT IN LIABILITY UNDER APPLICABLE LAWS.



TITLE
 PARTIAL SECTION THROUGH COURTYARD

PROJ. BARC	DRAWN BY CL
SCALE 1:300	CHECKED BY CH
PAPER SIZE 11X17	PHASE RZS
DATE 09/02/2018	REVISION
DRAWING NO. A-27-001	



PROJECT

 1070 BARCLAY STREET
 WEST END, VANCOUVER,
 BRITISH COLUMBIA, CANADA

CLIENT
BOSA BOSA PROPERTIES
 1100 - 808 WEST HASTINGS STREET
 VANCOUVER, BRITISH COLUMBIA
 CANADA V6V 0H6

 **KINGSWOOD PROPERTIES**
 710 W GEORGIA STREET
 VANCOUVER, BRITISH COLUMBIA
 CANADA V7Y 1A1

LEAD DESIGN CONSULTANT
BURO OLE SCHEEREN LIMITED
 UNIT 2007 B, TOWER TWO, LIPOO CENTER
 81 QUEENSWAY, JOHANNESBURG
 HONG KONG
 TEL: +852 2362 8870
 WWW.BURO-OLE.COM

COLLABORATING ARCHITECT
FRANCL ARCHITECTURE
 184 WEST 2ND AVENUE
 VANCOUVER, BRITISH COLUMBIA
 CANADA V6J 1R4

STRUCTURAL CONSULTANT
GLOTMAN+SIMPSON
 1881 WEST 5th AVENUE
 VANCOUVER, BRITISH COLUMBIA
 CANADA V6J 1S5

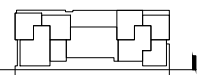
LANDSCAPE CONSULTANT
PFS STUDIO
 1777 WEST 34th AVENUE
 VANCOUVER, BRITISH COLUMBIA
 CANADA V6L 1S7

TRAFFIC CONSULTANT
BUNT & ASSOCIATES
 SUITE 100, 1080 WEST PENDER STREET
 VANCOUVER, BRITISH COLUMBIA
 CANADA V6E 3P7

REV	DATE	DESCRIPTION

NOT FOR CONSTRUCTION

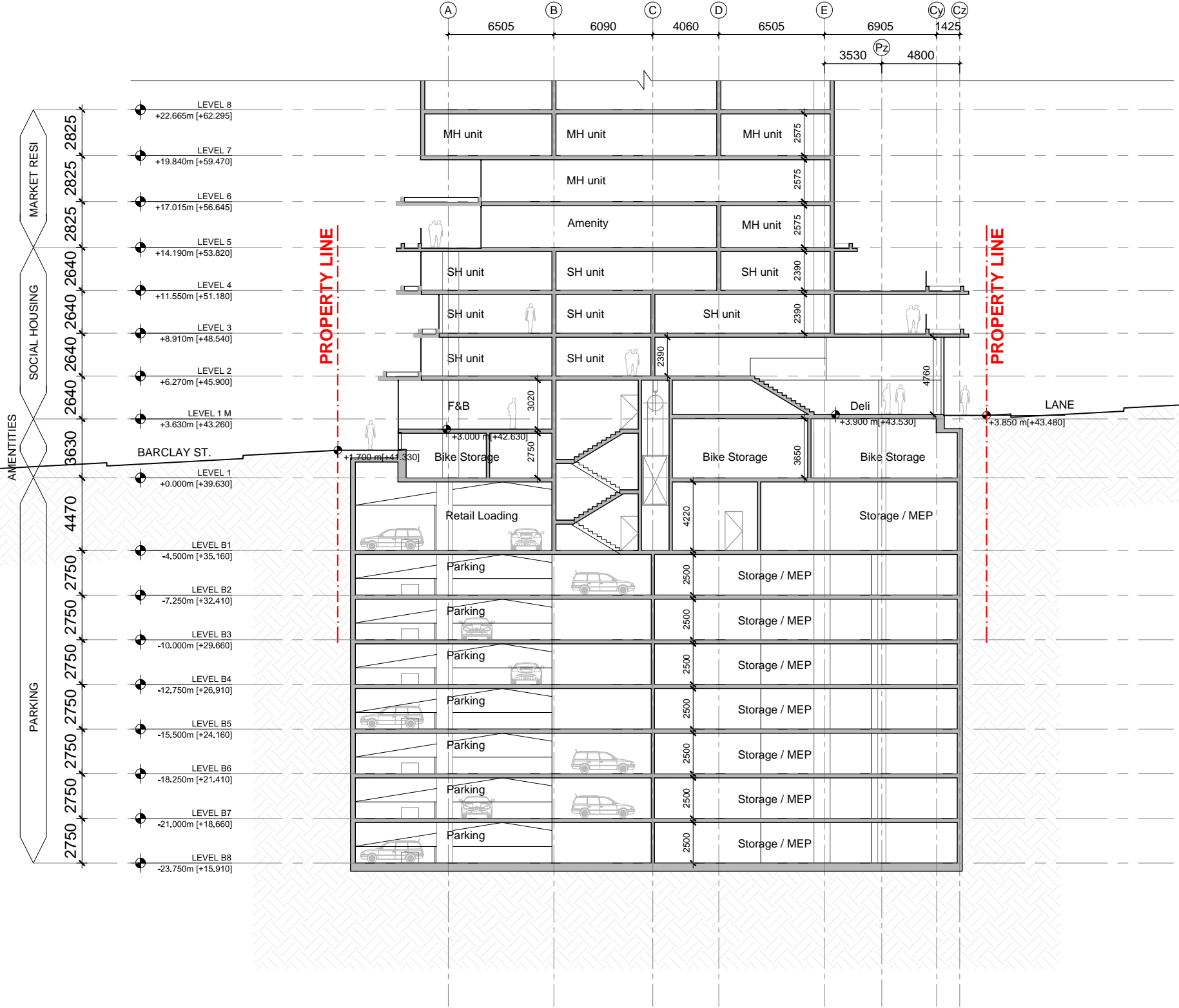
DO NOT SCALE FROM DRAWING. ALL DIMENSIONS MUST BE VERIFIED ON SITE. THIS DOCUMENT CONTAINS COPYRIGHTED MATERIAL. ANY UNAUTHORIZED USE, DISCLOSURE, REPRODUCTION OR DUPLICATION OF ANY OF THE INFORMATION CONTAINED HEREIN MAY RESULT IN LIABILITY UNDER APPLICABLE LAWS.

KEY PLAN


TITLE
 PARTIAL SECTION THROUGH
 LOADING

PROJ.	BARC	DRAWN BY	CL
SCALE	1:300	CHECKED BY	CH
PAPER SIZE	11X17	PHASE	RZS
DATE	09/02/2018	REVISION	
DRAWING NO.	A-27-002		

WEST TOWER



PROJECT

 1070 BARCLAY STREET
 WEST END, VANCOUVER,
 BRITISH COLUMBIA, CANADA

CLIENT
BOSA BOSA PROPERTIES
 1100 - 608 WEST HASTINGS STREET
 VANCOUVER, BRITISH COLUMBIA
 CANADA V6V 0M6

 **KINGSWOOD PROPERTIES**
 710 W. GEORGIA STREET
 VANCOUVER, BRITISH COLUMBIA
 CANADA V7Y 1A1

LEAD DESIGN CONSULTANT
 **BURO OLE SCHEEREN LIMITED**
 UNIT 2007 8, TOWER TWO, LIPOO CENTER
 80 QUEENSWAY, JONKRAAL
 HONG KONG
 TEL: +852 2301 8870
 WWW.BURO-OS.COM

COLLABORATING ARCHITECT
 **FRANCL ARCHITECTURE**
 1884 WEST 2ND AVENUE
 VANCOUVER, BRITISH COLUMBIA
 CANADA V6J 1M4

STRUCTURAL CONSULTANT
 **GLOTMAN+SIMPSON**
 1861 WEST 6TH AVENUE
 VANCOUVER, BRITISH COLUMBIA
 CANADA V6J 1S6

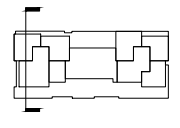
LANDSCAPE CONSULTANT
 **PFS STUDIO**
 1777 WEST 3RD AVENUE
 VANCOUVER, BRITISH COLUMBIA
 CANADA V6J 1S7

TRAFFIC CONSULTANT
 **BUNT & ASSOCIATES**
 SUITE 1000, 1080 WEST PENDER STREET
 VANCOUVER, BRITISH COLUMBIA
 CANADA V6E 3E7

REV	DATE	DESCRIPTION

NOT FOR CONSTRUCTION

DO NOT SCALE FROM DRAWING. ALL DIMENSIONS MUST BE VERIFIED ON SITE. THIS DOCUMENT CONTAINS COPYRIGHTED MATERIAL. ANY UNAUTHORIZED USE, DISCLOSURE, DISSEMINATION OR DUPLICATION OF ANY OF THE INFORMATION CONTAINED HEREIN MAY RESULT IN LIABILITY UNDER APPLICABLE LAWS.

KEY PLAN


TITLE
PARTIAL SECTION THROUGH F&B

PROJ. BARC	DRAWN BY CL
SCALE 1:300	CHECKED BY CH
PAPER SIZE 11X17	PHASE RZS
DATE 09/02/2018	REVISION

DRAWING NO.
A-27-003