

Revisions

1 Issued For Rezoning 7/24/19

VAHA KINGSWAY

1001 KINGSWAY
VANCOUVER BC V5V 3C7

Drawing Title

ELEVATIONS,
EXTERIOR SOUTH
ELEVATION

Date: 7/24/2019

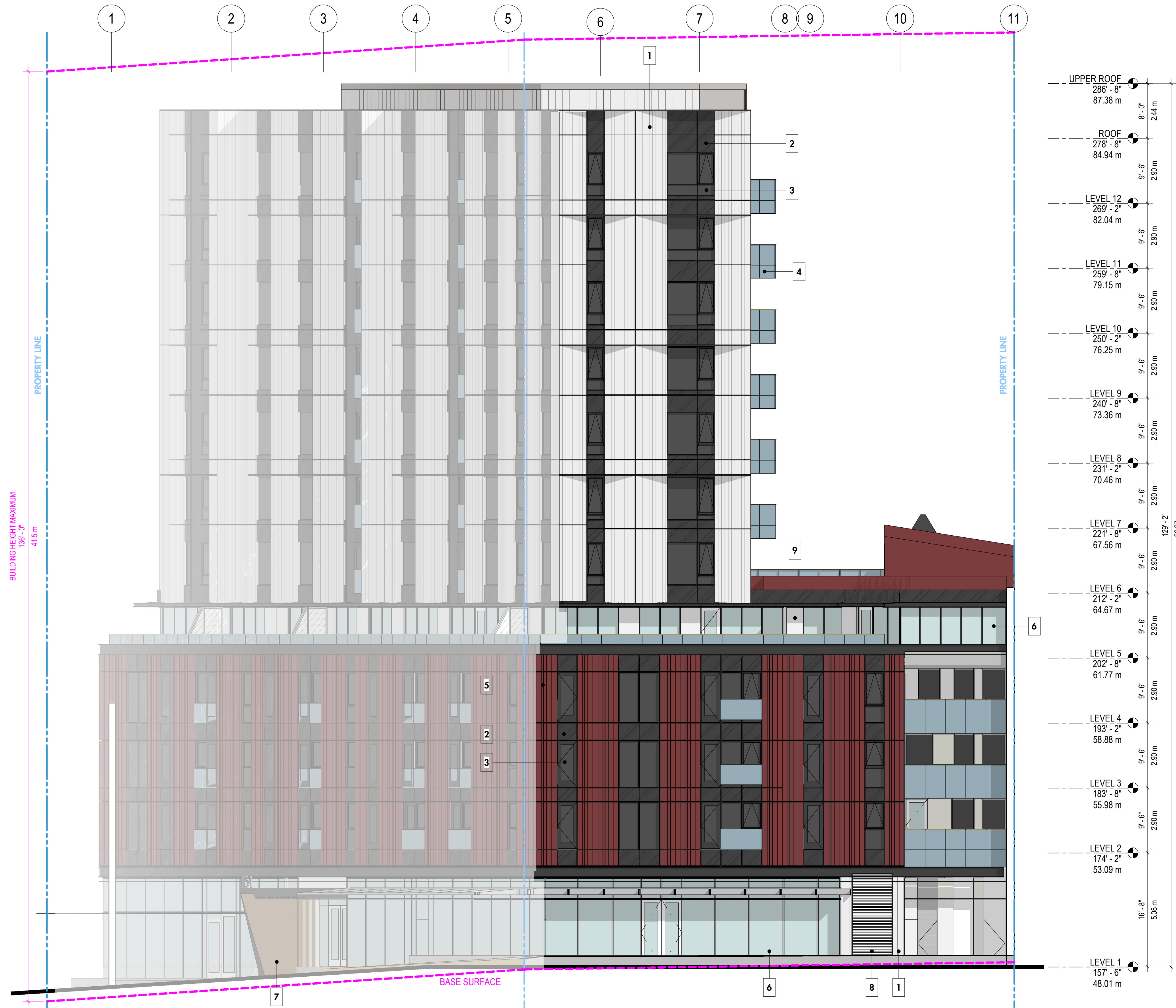
Job No: 24845.akin

Drawn By: KB

Checked By: AT

Drawing No.

A3.10



1 South Elevation
A3.10 1/8" = 1'-0"

- 1- EXTRUDED ALUMINUM PANEL (CORRUGATED) - BRILLIANT SILVER
- 2- SATIN ALUMINUM PANEL - CHARCOAL GRAY
- 3- VISION GLAZING 1 - DARK REFLECTIVE
- 4- CLEAR MONOLITHIC GUARDRAIL GLAZING
- 5- ARTICULATED ALUMINIUM PANEL - RUSTED METAL COLOUR
- 6- VISION GLAZING 2 - CLEAR NON-REFLECTIVE
- 7- EXTERIOR WOOD VENEER
- 8- EXTERIOR METAL LOUVER
- 9- SATIN ALUMINUM PANEL - CHAMPAGNE GRAY

Revisions

1 Issued For Rezoning 7/24/19

VAHA KINGSWAY

1001 KINGSWAY
VANCOUVER BC V5V 3C7

Drawing Title

ELEVATIONS,
EXTERIOR WEST
ELEVATION

Date: 7/24/2019

Job No: 24845.akin

Drawn By: KB

Checked By: AT

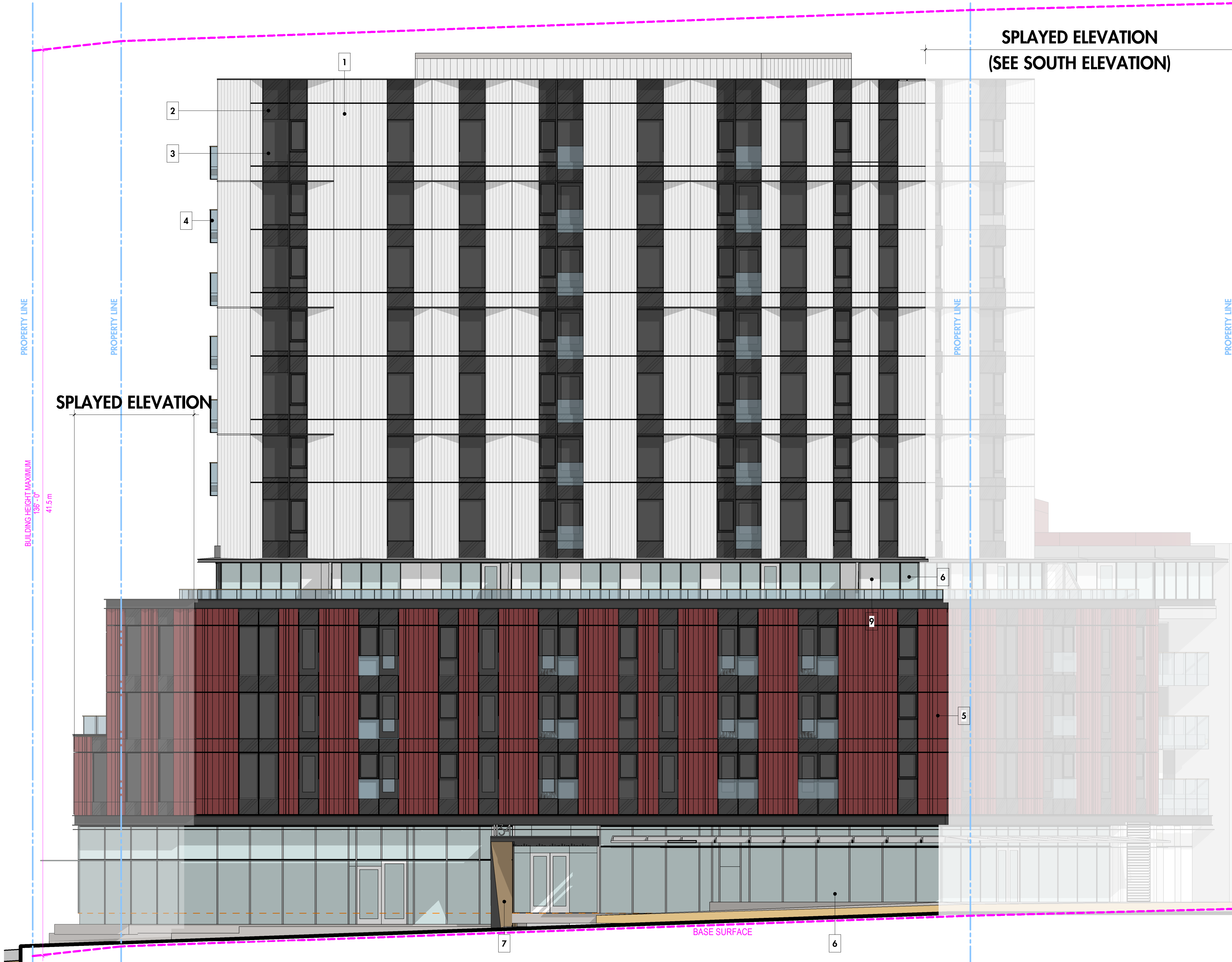
Drawing No.

A3.11

SPLAYED ELEVATION
(SEE SOUTH ELEVATION)

| | | | | |
|------------|-----------|---------|----------|--------|
| UPPER ROOF | 286' - 8" | 87.38 m | 8' - 0" | 2.44 m |
| ROOF | 278' - 8" | 84.94 m | 9' - 6" | 2.90 m |
| LEVEL 12 | 269' - 2" | 82.04 m | 9' - 6" | 2.90 m |
| LEVEL 11 | 259' - 8" | 79.15 m | 9' - 6" | 2.90 m |
| LEVEL 10 | 250' - 2" | 76.25 m | 9' - 6" | 2.90 m |
| LEVEL 9 | 240' - 8" | 73.36 m | 9' - 6" | 2.90 m |
| LEVEL 8 | 231' - 2" | 70.46 m | 9' - 6" | 2.90 m |
| LEVEL 7 | 221' - 8" | 67.56 m | 9' - 6" | 2.90 m |
| LEVEL 6 | 212' - 2" | 64.67 m | 9' - 6" | 2.90 m |
| LEVEL 5 | 202' - 8" | 61.77 m | 9' - 6" | 2.90 m |
| LEVEL 4 | 193' - 2" | 58.88 m | 9' - 6" | 2.90 m |
| LEVEL 3 | 183' - 8" | 55.98 m | 9' - 6" | 2.90 m |
| LEVEL 2 | 174' - 2" | 53.09 m | 16' - 8" | 5.09 m |
| LEVEL 1 | 157' - 6" | 48.01 m | | |

- 1- EXTRUDED ALUMINIUM PANEL (CORRUGATED) - BRILLIANT SILVER
- 2- SATIN ALUMINIUM PANEL - CHARCOAL GRAY
- 3- VISION GLAZING 1 - DARK REFLECTIVE
- 4- CLEAR MONOLITHIC GUARDRAIL GLAZING
- 5- ARTICULATED ALUMINIUM PANEL - RUSTED METAL COLOUR
- 6- VISION GLAZING 2 - CLEAR NON-REFLECTIVE
- 7- EXTERIOR WOOD VENEER
- 8- EXTERIOR METAL LOUVER
- 9- SATIN ALUMINIUM PANEL - CHAMPAGNE GRAY



SPLAYED ELEVATION

PROPERTY LINE

PROPERTY LINE

PROPERTY LINE

PROPERTY LINE

BUILDING HEIGHT MAXIMUM
135'-0"
41.5 m

BASE SURFACE

2019-07-24 11:09:30

1 West Elevation
A3.11 1/8" = 1'-0"

Revisions

1 Issued For Rezoning 7/24/19

VAHA KINGSWAY

1001 KINGSWAY
VANCOUVER BC V5V 3C7

Drawing Title

ELEVATIONS,
EXTERIOR NORTH
ELEVATION

Date: 7/24/2019

Job No: 24845.akin

Drawn By: KB

Checked By: AT

Drawing No.

A3.12



| | | |
|------------|---------|---------|
| UPPER ROOF | 286'-8" | 87.38 m |
| ROOF | 278'-8" | 84.94 m |
| LEVEL 12 | 269'-2" | 82.04 m |
| LEVEL 11 | 259'-8" | 79.15 m |
| LEVEL 10 | 250'-2" | 76.25 m |
| LEVEL 9 | 240'-8" | 73.36 m |
| LEVEL 8 | 231'-2" | 70.46 m |
| LEVEL 7 | 221'-8" | 67.56 m |
| LEVEL 6 | 212'-2" | 64.67 m |
| LEVEL 5 | 202'-8" | 61.77 m |
| LEVEL 4 | 193'-2" | 58.88 m |
| LEVEL 3 | 183'-8" | 55.98 m |
| LEVEL 2 | 174'-2" | 53.09 m |
| LEVEL 1 | 157'-6" | 48.01 m |

- 1- EXTRUDED ALUMINUM PANEL (CORRUGATED) - BRILLIANT SILVER
- 2- SATIN ALUMINUM PANEL - CHARCOAL GRAY
- 3- VISION GLAZING 1 - DARK REFLECTIVE
- 4- CLEAR MONOLITHIC GUARDRAIL GLAZING
- 5- ARTICULATED ALUMINIUM PANEL - RUSTED METAL COLOUR
- 6- VISION GLAZING 2 - CLEAR NON-REFLECTIVE
- 7- EXTERIOR WOOD VENEER
- 8- EXTERIOR METAL LOUVER
- 9- SATIN ALUMINUM PANEL - CHAMPAGNE GRAY

1 North Elevation
A3.12 1/8" = 1'-0"

Revisions

1 Issued For Rezoning 7/24/19

VAHA KINGSWAY

1001 KINGSWAY
VANCOUVER BC V5V 3C7

Drawing Title

ELEVATIONS,
EXTERIOR EAST
ELEVATION

Date: 7/24/2019

Job No: 24845.akin

Drawn By: KB

Checked By: AT

Drawing No.

A3.13



- 1- EXTRUDED ALUMINIUM PANEL (CORRUGATED) - BRILLIANT SILVER
- 2- SATIN ALUMINIUM PANEL - CHARCOAL GRAY
- 3- VISION GLAZING 1 - DARK REFLECTIVE
- 4- CLEAR MONOLITHIC GUARDRAIL GLAZING
- 5- ARTICULATED ALUMINIUM PANEL - RUSTED METAL COLOUR
- 6- VISION GLAZING 2 - CLEAR NON-REFLECTIVE
- 7- EXTERIOR WOOD VENEER
- 8- EXTERIOR METAL LOUVER
- 9- SATIN ALUMINIUM PANEL - CHAMPAGNE GRAY

1 East Elevation
A3.13 1/8" = 1'-0"