

NORTH VIEW ALONG CAMBIE ST



VIEW FROM CAMBIE ST

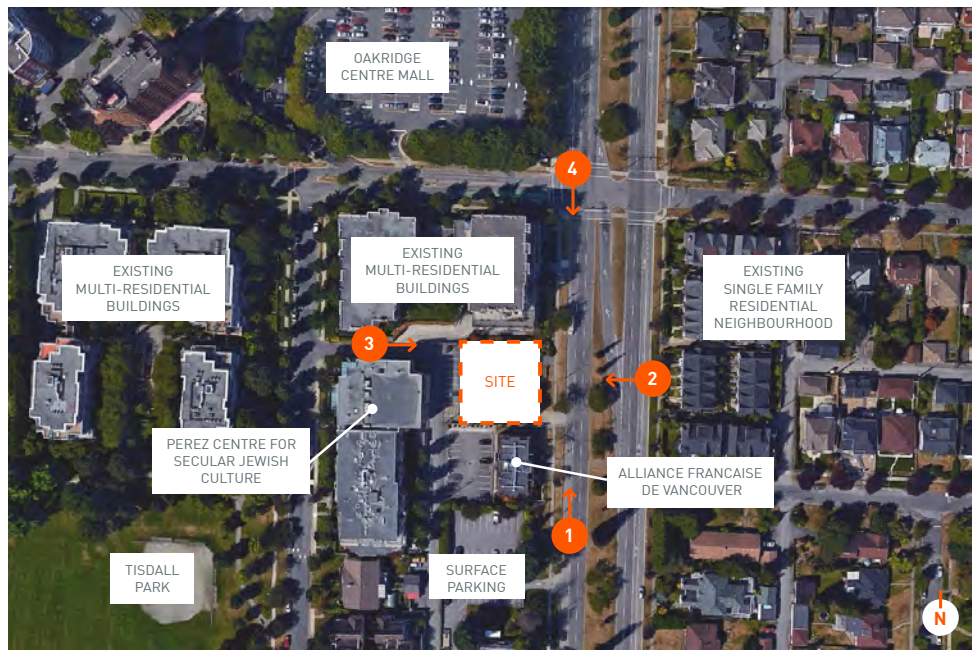


VIEW FROM REAR LANE



CORNER OF CAMBIE ST & 45TH AVE

EXISTING SITE CONDITION



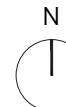
SITE PLAN

NOTES

NO. DESCRIPTION

REVISIONS

NO.	DATE	REMARKS
1	DEC 12	REZONING SUBMISSION



CHINESE PRESBYTERIAN CHURCH
6137 CAMBIE
MIXED USE DEVELOPMENT

SITE CONTEXT

DATE	DEC 12TH 2016
DRAWN BY	CM
CHECKED BY	SL
SCALE	
JOB NUMBER	1514

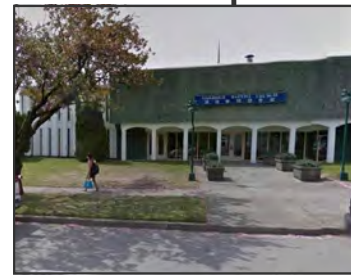
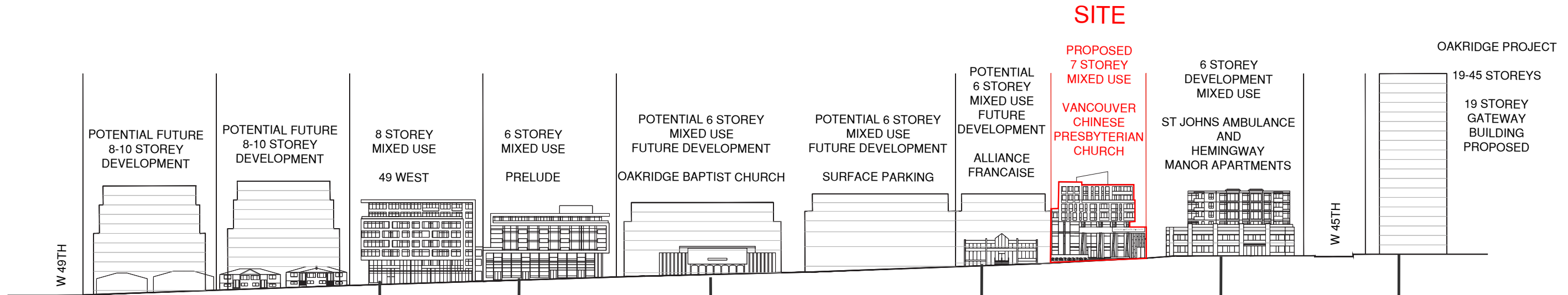
CAMBIE STREETSCAPE 45TH AVENUE - 49TH AVENUE



GBL ARCHITECTS
139 EAST 8TH AVENUE
VANCOUVER, CANADA V6T 1R8
T 604 736 1156 F 604 731 5279
GBLARCHITECTS.COM

THIS DOCUMENT IS THE PROPERTY OF GBL ARCHITECTS AND NOT BE LOANED, REPRODUCED, COPIED, OR DISTRIBUTED WITHOUT THE WRITTEN CONSENT OF GBL ARCHITECTS.

NOTES
NO. DESCRIPTION



REVISIONS		
NO.	DATE	REMARKS
1	DEC 12	REZONING SUBMISSION



CHINESE PRESBYTERIAN CHURCH
6137 CAMBIE
MIXED USE DEVELOPMENT

SITE CONTEXT - STREET

DATE	DEC 12TH 2016
DRAWN BY	CM
CHECKED BY	SL
SCALE	1/8"=1'-0"
JOB NUMBER	1514

A-1.02