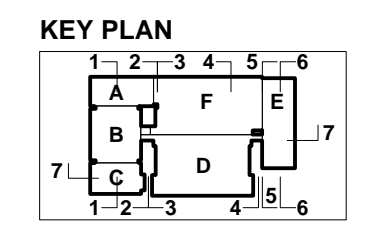


AREA LABEL LEGEND

AREA NAME	ref number	component number	size on plan drawing



- A north wing senior school
- B senior school
- C south wing senior school
- D middle building
- E junior school
- F underground auditorium wing

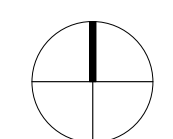
ACTON OSTRY ARCHITECTS INC

111 E 8 Avenue
Vancouver BC
Canada V5T 1R8
t 604.739.3344
f 604.739.3355
info@actonostroy.ca

York House School

York House School
4176 Alexandra Street

scale	date
1:200	15 Dec 2016
project code	status
YHS_RZ	REZONING
drawn	checked
MZ / SIK	MO

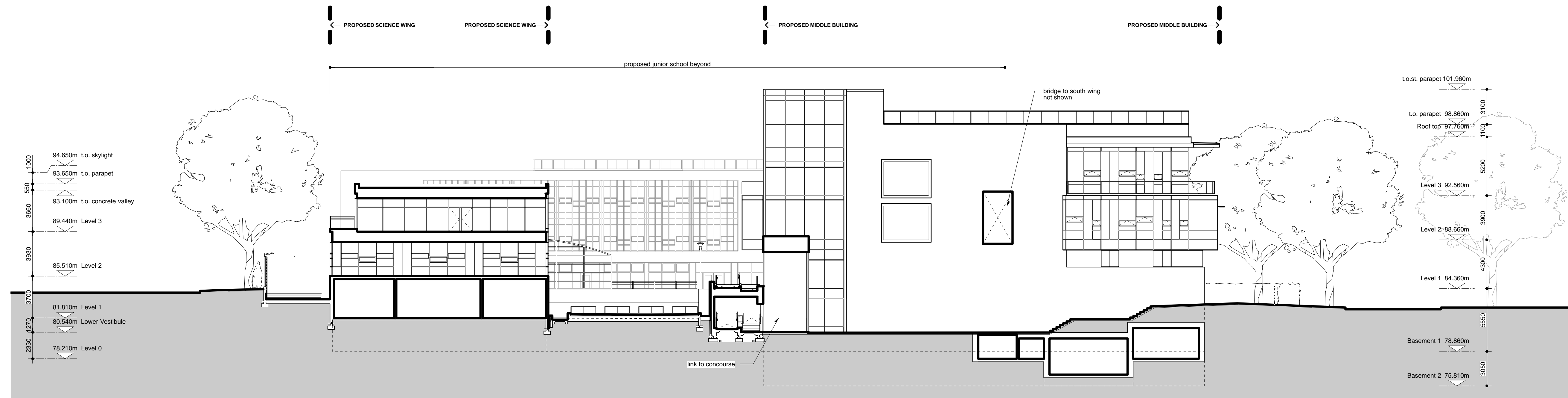


SECTION 1 / 2

drawing number
A201

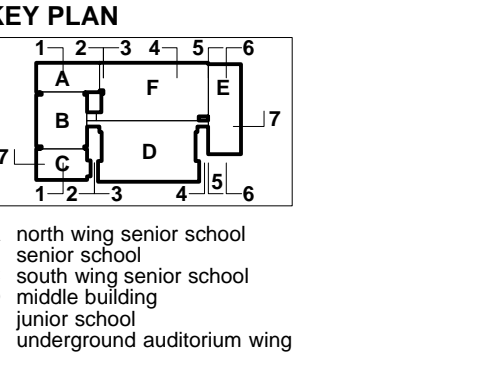
1 Section 1
1:200

2 Section 2
1:200



AREA LABEL LEGEND

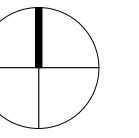
AREA NAME	ref number	component number	size on plan drawing



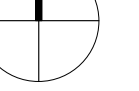
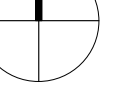
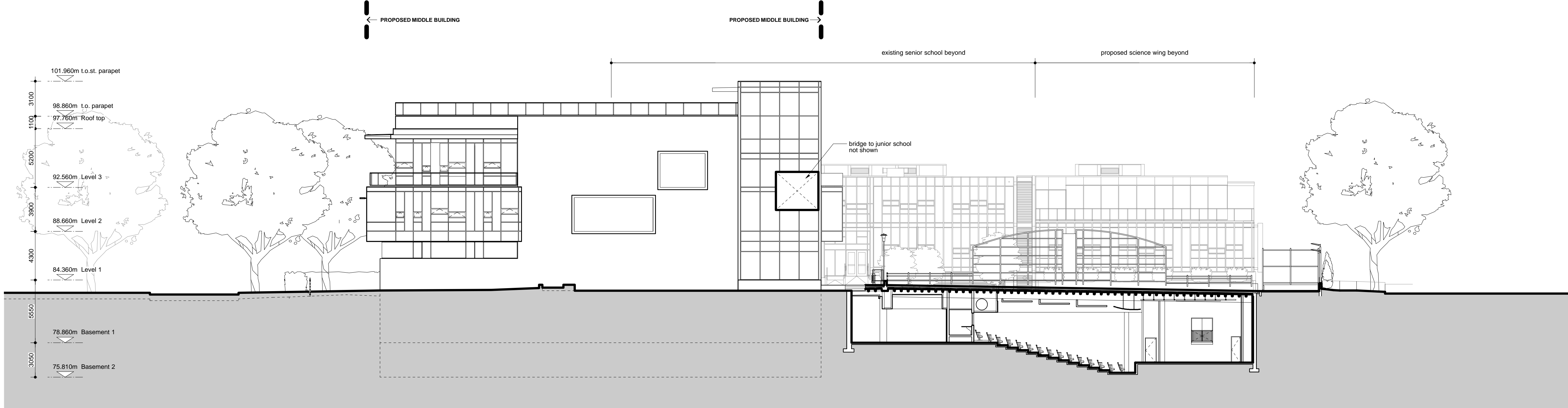
ACTON OSTRY ARCHITECTS INC
111 E 8 Avenue
Vancouver BC
Canada V5T 1R8
t 604.739.3344
f 604.739.3355
info@actonostroy.ca

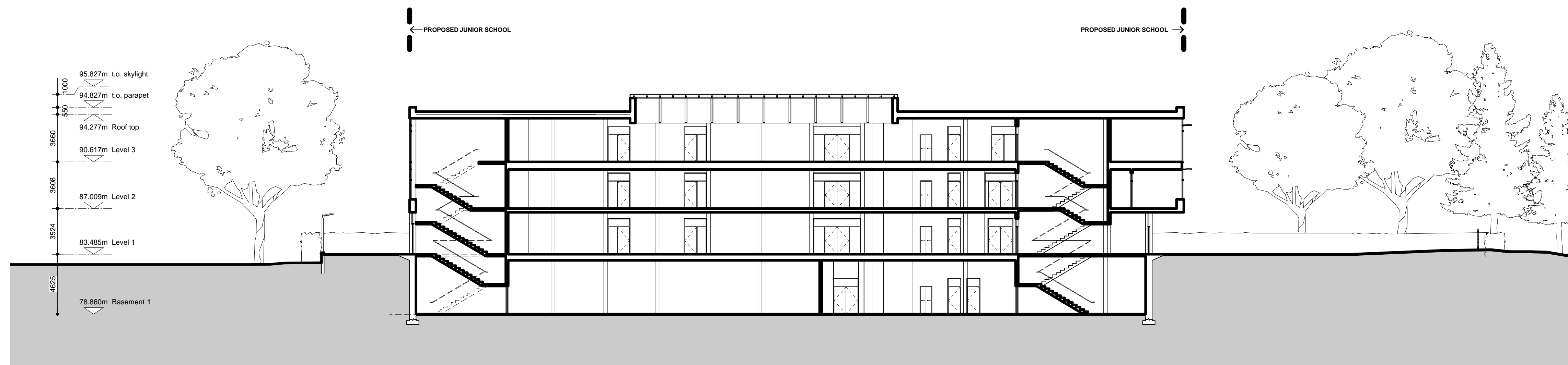
York House School
York House School
4176 Alexandra Street

scale	date
1:200	15 Dec 2016
project code	status
YHS.RZ	REZONING
drawn	checked
MZ	MO



1 Section 3
1:200

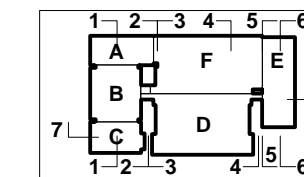




AREA LABEL LEGEND

AREA NAME	ref number	component number	size on plan drawing
A	1	1	1
B	2	2	2
C	3	3	3
D	4	4	4
E	5	5	5
F	6	6	6

KEY PLAN



- A north wing senior school
- B senior school
- C south wing senior school
- D middle building
- E junior school
- F underground auditorium wing

ACTON OSTRY ARCHITECTS INC

111 E 8 Avenue
Vancouver BC
Canada V5T 1R8
t 604.739.3344
f 604.739.3355
info@actonostroy.ca

York House School

York House School
4176 Alexandra Street

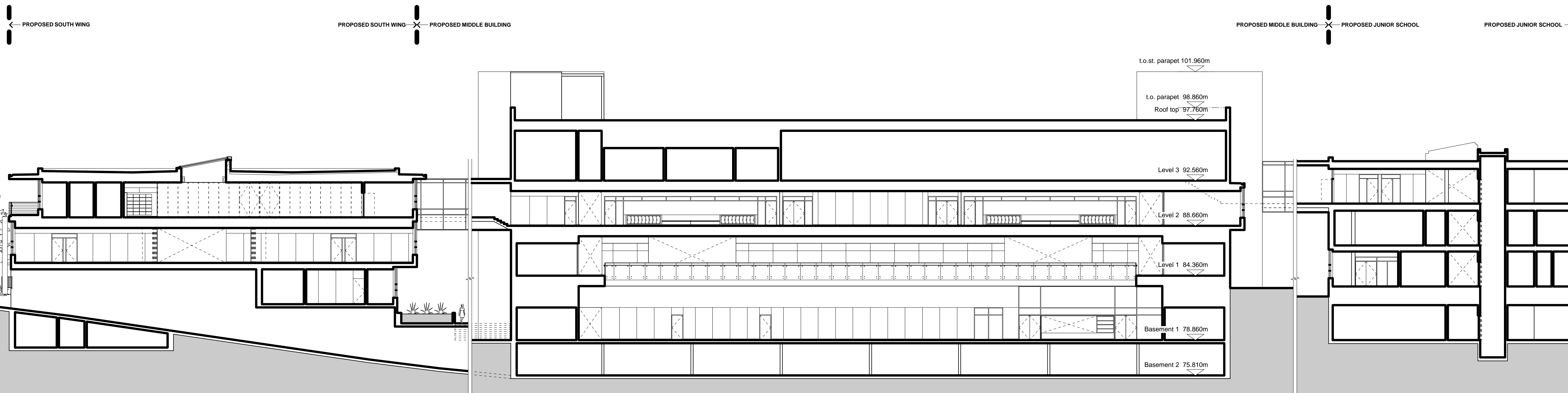
scale	date
1:200	15 Dec 2016
project code	status
YHS.RZ	REZONING
drawn	checked
MZ / SIK	MO



SECTION 6 / 7

drawing number
A203

1 Section 6
1:200



2 Section 7
1:200